

Contents

<i>List of Tables</i>	<i>ii</i>
<i>List of Figures</i>	<i>iv</i>
<i>Rattler Quick Facts</i>	<i>v</i>
University Profile 2006-07.....	1
Historical Timeline.....	2
Presidents of St. Mary's University.....	3
University Mission Statement.....	4
Organizational Charts.....	5
Enrollment.....	12
Schools.....	30
New Students.....	39
Retention &and Graduation.....	47
Degrees Conferred.....	52
Faculty.....	57
Student Development.....	67
Administration and Staff.....	72
Finance.....	92
Data Terms.....	77

List of Tables

Tables	Page
Enrollment	
1. Attendance Status and Program	12
2. Program and Gender.....	13
3. Program, Gender and Attendance Status.....	14
4. Undergraduate Enrollment by Classification, Attendance Status and Gender.....	15
5. Credit hours by Attendance Status and Program.....	17
6. Credit hours by Program, Gender and Attendance Status.....	18
7. Credit Hours by Undergraduate Classification, Gender and Attendance Status.....	19
8. Full-Time Equivalent (FTE) by Program.....	21
9. Race and Ethnicity by Program.....	22
10. Percentages: Race and Ethnicity by Program.....	23
11. Geographic Origin by Program.....	26
12. Geographic Origin by Region, State and Territory, Fall 2006	27
13. Countries Represented in Total Enrollment.....	28
14. Religious Preference by Program, Fall 2006.....	29
Schools	
15. Enrollment by School.....	30
16. Undergraduate Enrollment: Top 20 Majors, Fall 2006.....	30
17. Enrollment by Major: Bill Greehey School of Business.....	31
18. Percentage by Major: Bill Greehey School of Business.....	31
19. Enrollment by Major: Humanities and Social Sciences.....	32
20. Percentage by Major: Humanities and Social Sciences.....	33
21. Enrollment by Major: Science, Engineering and Technology.....	34
22. Percentage by Major: Science, Engineering and Technology.....	35
23. Enrollment by Graduate Program.....	36
24. Percentage in Graduate Program.....	37
25. Enrollment by Doctoral Program.....	38
26. Percentage in Doctoral Program.....	38
New Students	
27. First-time, First-year Undergraduates who applied, admitted and enrolled.....	39
28. Yield Rates.....	39
29. First-Time Freshmen: High School Percentile.....	40
30. First-Time Freshmen: Mean/Median Test Scores.....	40
31. First-Time Freshmen by Type of High School.....	40
32. First-Time Freshmen: Race and Ethnicity.....	41
33. First-Time Freshmen: Race and Ethnicity (Percentage).....	41
34. First-Time Freshmen by Geographic Representation.....	41
35. First-Time Freshmen by Geographic Representation (Percentage).....	41
36. First-Time Freshmen: Entering Major by School.....	42
37. Transfer Students who applied, admitted and enrolled.....	44
38. Yield Rates.....	44
39. Transfer Students: Race and Ethnicity.....	45
40. Transfer Students: Entering College Grade Point Average.....	45

41. Transfers: Entering Classification.....	45
42. Transfers by Type of Institution.....	45
43. Law Students.....	46
44. Yield Rates.....	46

Retention and Graduation Rates

45. Retention Rates.....	47
46. Mean/Median One-Year Retention Rates.....	47
47. Graduation and Persistence Rates: 1989 - 1999 Cohorts.....	49
48. Graduation and Persistence Rates: 1989 - 1999 Cohorts.....	50
49. Mean Graduation Rates After 6 Years Enrolled (1989-1999).....	50
50. 2005-2006 Degrees Conferred.....	52

Degrees Conferred

51 . 2005-2006 Degrees Awarded by Type and Gender.....	52
52. Degrees by CIP Categories*.....	52
53. Graduating Students by Program, Race and Ethnicity.....	53
54. Graduating Students by Major: Bill Greehey School of Business.....	54
55. Graduating Students by Major: Humanities and Social Sciences.....	54
56. Graduating Students by Major: Science Engineering and Technology.....	55
57. Graduating Students by Master's Program.....	56
58. Graduating Students by Doctoral Program.....	56
59. Graduating Law Students.....	56

Faculty

60. Full-time/Part-time Faculty.....	57
61. Full-time Faculty by Race and Ethnicity.....	58
62. Percentage of Full-time Faculty by Race and Ethnicity.....	59
63. Full-time Faculty by Level of Appointment.....	60
64. Full-time Faculty by Level of Appointment, Gender, Race and Ethnicity, Fall 2006	61
65. Full-time Faculty and Tenure Status.....	61
66. Full-time Faculty by Level of Appointment, Gender, Race and Ethnicity, Fall 2006	62
67. Full-time Faculty and Tenure Status.....	62
68. Full-time Faculty by Level of Appointment, Gender, Race and Ethnicity, Fall 2006	63
69. Full-time Faculty and Tenure Status.....	63
70. Full-time Faculty by Level of Appointment, Gender, Race and Ethnicity, Fall 2006	64
71. Full-time Faculty and Tenure Status.....	64
72. Full-time Faculty by Level of Appointment, Gender, Race and Ethnicity, Fall 2006	65
73. Full-time Faculty and Tenure Status.....	65
74. Full-time Faculty by Level of Appointment, Gender, Race and Ethnicity, Fall 2006	66
75. Full-time Faculty and Tenure Status.....	66

Student Development

76. New Student Orientation.....	67
77. Personal and Academic Development Course: ND101.....	67
78. Residence Hall Occupancy by Classification and Gender, Fall 2006.....	68
79. Residence Hall Capacity.....	68
80. Non-Greek Student Organizations.....	69
81. Greek Organizations.....	69
82. Presidential Awards: Spring 2006.....	69
83. Career Services Center.....	70
84. Campus Recreation.....	70
85. Annual Utilization of Student Health Center by Program Level.....	71
86. Immunization Compliance Rates Among Resident Hall and International Students..	71

Administration and Staff

87. Full-time Administration and Staff by Gender, Race/Ethnicity and Classification....	72
88. Full-time Administration and Staff by Gender, Race/Ethnicity and Classification..	73
89. Administration and Staff by Classification, Gender and Employment Status.....	73
90. Administration and Staff by Race, Ethnicity, Gender and Employment Status.....	73
91. Employee Classification by Race, Ethnicity, Gender and Employment Status.....	74

Finance

92. Financial Summary.....	75
----------------------------	----

List of Figures

Figure	Page
1. Enrollment Pyramids by Age and Gender, Fall 2006.....	24
2. Enrollment Pyramids by Age and Gender, Fall 2006.....	25
3. Median One-Year Retention Rates Fall 1998 to 2005 Cohorts.....	48
4. Mean Graduation Rates After 6 Years Enrolled (1989-1999).....	51
5. Immunization Compliance.....	71

Rattler Quick Facts 2006-2007

Enrollment

	Total	Full-time	Part-time	Men	Women
Total.....	3,904	3,169	735	1,716	2,188
Undergraduate.....	2,400	2,205	195	963	1,437
Graduate - Master's.....	698	203	495	316	382
Graduate - Ph.D.....	57	27	30	7	50
Law.....	749	734	15	430	319
Race and Ethnicity	Total	Percent			
African-American.....	139	3.6			
American Indian/AK Native.....	12	0.3			
Asian/Pacific Islander.....	108	2.8			
Hispanic Origin.....	2,069	53.0			
White, non-Hispanic.....	1,219	31.2			
Unknown/Other.....	239	6.1			
International.....	118	3.0			

Undergraduate Admission: First-Year Student Characteristics

Number of Applications.....	1,998
Number offered Admission.....	1,450
Enrolled.....	548
Acceptance Rate.....	73%
Yield Rate.....	38%
Median SAT	1040
Mean SAT.....	1050
Median ACT.....	22
Mean ACT.....	22
Top 10% High School Class.....	32%
Top 25% High School Class.....	64%
First-year Undergraduates:	
from Bexar County.....	43%
from Texas other than Bexar County.....	48%
from United States outside Texas.....	7%
International Students.....	2%

Undergraduate Admission: Transfer Students

Number of Applications.....	424
Number Offered Admission.....	249
Enrolled.....	139
Acceptance Rate.....	59%
Yield Rate.....	56%

Rattler Quick Facts 2006-2007

Undergraduate Retention and Graduation Rates

Median Freshmen to Sophomore Retention Rates: (1992-2005 Cohorts): 79.3

2005 Freshmen Cohort Retention Rate: 79.9

Mean Graduation Rates of Entering First-Year Students 4, 5 and 6 Years After Enrolled (1989-1999 Cohorts)

After 4-years.....	31.3
After 5-years.....	56.0
After 6-years.....	60.1

Degrees Awarded

Degrees Awarded from July 1, 2005 to June 30, 2006

Total.....	957
Bachelor's.....	508
Master's.....	199
Ph.D.....	8
Law.....	242

Faculty, Administration and Staff

Student to Faculty Ratio: 13 to 1

	Total	Percent
Full-time Faculty.....	183	100.0
Men.....	122	67.0
Women.....	61	33.0
Part-time Faculty.....	142	

Administration and Staff

Full-Time Administration and Staff...	410	100.0
Men.....	165	40.2
Women.....	245	59.8
Part-Time Administration and Staff...	40	

Residence Halls

Capacity.....	1,115
Occupancy.....	1,122
Undergraduate.....	1,070
Graduate.....	26
Law.....	26

University Profile, 2006-2007

St. Mary's University, founded in 1852 by Marianist brothers and priests, is the first institution of higher learning in San Antonio and the oldest Catholic university in Texas and the Southwest.

Personal attention and powerful academic programs have made St. Mary's, located on 135 acres northwest of downtown San Antonio, a nationally recognized liberal arts institution. With a diverse student population of more than 3,900 of all faiths and backgrounds, St. Mary's is home to five schools: Bill Greehey School of Business; Humanities and Social Sciences; Science, Engineering and Technology; Graduate and Law.

The University provides a Catholic education experience that evokes academic excellence while integrating liberal studies, professional preparation and ethical commitment. St. Mary's 183 full-time faculty members, 92 percent of whom hold doctoral or terminal degrees in their field, are committed to student success in and out of the classroom. St. Mary's offers 44 majors and 70 degree programs, including 11 joint degree programs. The student/faculty ratio of 13-to-1 permits small classes and promotes active learning.

This document presents commonly requested University data for use by the St. Mary's community. Unless otherwise noted throughout the document, the data reflects official University data collected on the 12th day of the fall semester for each academic year.

Executive Council

Charles L. Cotrell, Ph.D.
David Manuel, Ph.D.
Rebeckah J. Day
Suzanne M. Petrusch
Rev. Bernard J. Lee, S.M.
Katherine M. Sisoian
Thomas Galvin

President
Vice President for Academic Affairs
Vice President for Administration and Finance
Vice President for Enrollment Management
Vice President for Mission and Identity
Vice President for Student Development
Vice President for University Advancement

Academic Deans

Keith A. Russell, Ph.D.
Janet B. Dizinno, Ph.D.
Anthony J. Kaufmann, Ph.D.
Henry Flores, Ph.D.
R. William Piatt

Business and Administration
Humanities and Social Sciences
Science, Engineering and Technology
Graduate School
Law School

Historical Timeline

- 1817** The Blessed William Joseph Chaminade establishes the Society of Mary (Marianists) in France.
- 1852** Four French Marianists open school with faculty of five and enrollment of 12 boys.
- 1853** St. Mary's Institute opens along the east bank of the San Antonio River.
- 1882** Enrollment at 385; St. Mary's Institute changes name to St. Mary's College.
- 1891** The Marianist brothers purchase the current campus site - 75 acres northwest of town.
- 1894** St. Louis College campus opens at current location.
- 1895** State of Texas authorizes college to issue degrees, giving it the status of junior college.
- 1908** Reinbolt Hall built.
- 1916** First Oyster Bake held on the banks of the San Antonio River.
- 1921** St. Louis College becomes St. Mary's College.
- 1923** Twelve enroll in freshmen class to earn four-year degrees.
- 1927** Class of seven earns first bachelor degrees.
- 1927** St. Mary's College name changed to St. Mary's University.
- 1934** St. Mary's University takes over the administration of the seven year old San Antonio Law School.
- 1945** Department of Business formed.
- 1948** St. Mary's admitted into the Southern Association of Colleges & Universities.
- 1963** University admits 274 women full-time students, and formally becomes coeducational institution.
- 1974** Oyster Bake becomes an official Fiesta Event.
- 2000** Charles L. Cotrell, Ph.D., the University's 12th president and the first lay Marianist takes the helm.
- 2002** University celebrates Sesquicentennial.
- 2004** Gateway to Historic St. Mary's University opens.
- 2005** \$25 million gift from Bill Greehey, founder of Valero Corp., to endow the School of Business
- 2006** To honor his \$25 million gift, the business school is renamed, the Bill Greehey School of Business.
- 2007-** The Barrett Memorial Bell Tower is dedicated in honor of mother and son of Trustee and alumnus Charles Barrett Jr.

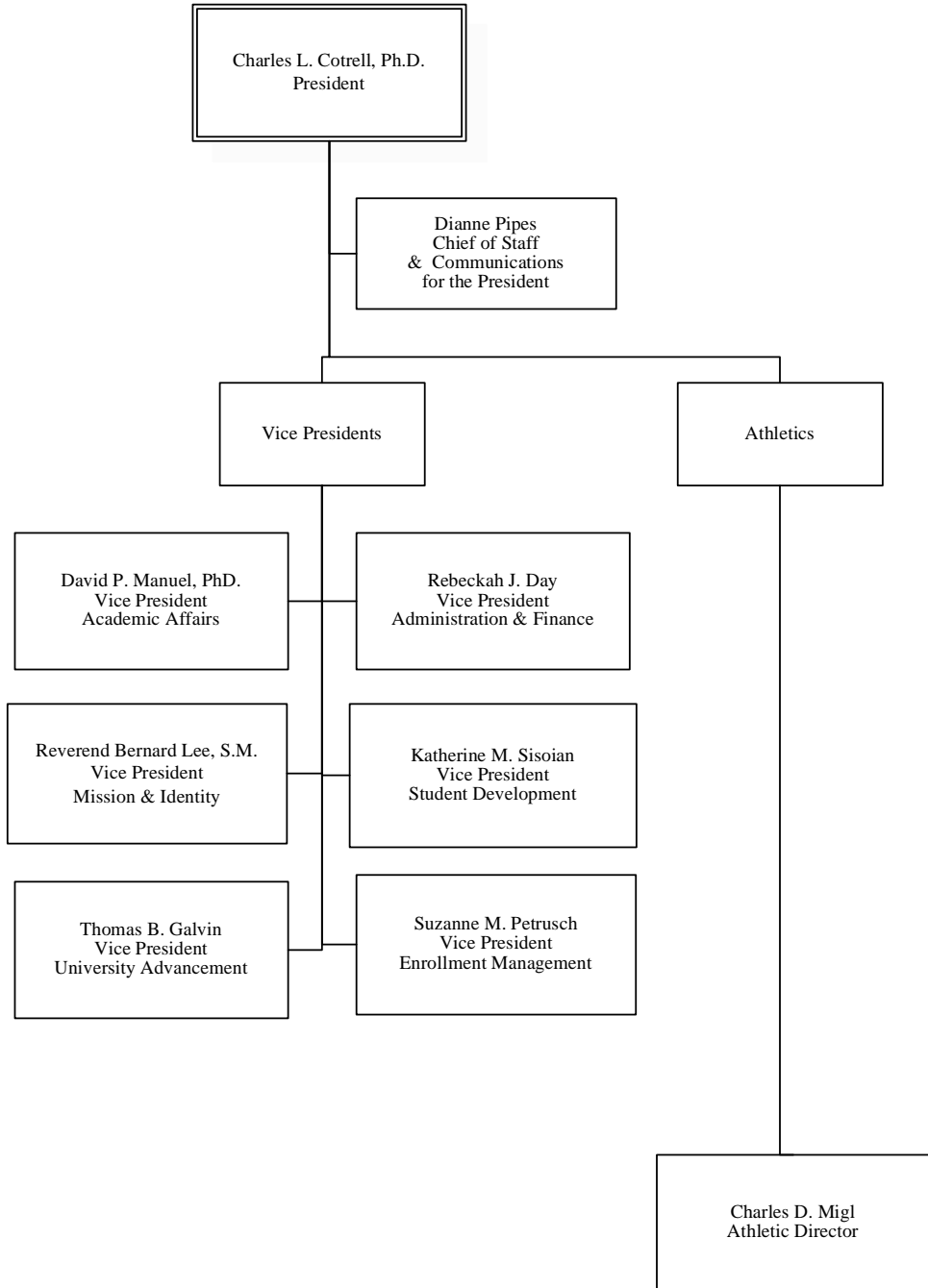
Presidents of St. Mary's University
Terms of Office

	Began	Ended	Years in Office	Age at Beginning of Term
Charles L. Cotrell, Ph.D.	1999	Current	6	59
Rev. John Moder, S.M.	1988	2000	11	40
Rev. John A. Leies, S. M.	1985	1988	3	59
Rev. David Paul, S.M.	1981	1985	4	43
Rev. James Young, S.M.	1973	1981	8	58
Rev. Louis J. Blume, S.M.	1963	1973	10	50
Rev. Charles Neumann, S.M.	1961	1963	2	38
Rev. Walter Buehler, S.M.	1953	1961	8	46
Rev. Louis J. Blume, S.M.	1947	1953	6	34
Rev. Walter Golatka, S.M.	1938	1947	9	48
Rev. Alfred Rabe, S.M.	1927	1938	11	41
Rev. Robert Mayl, S.M.	1923	1927	4	39

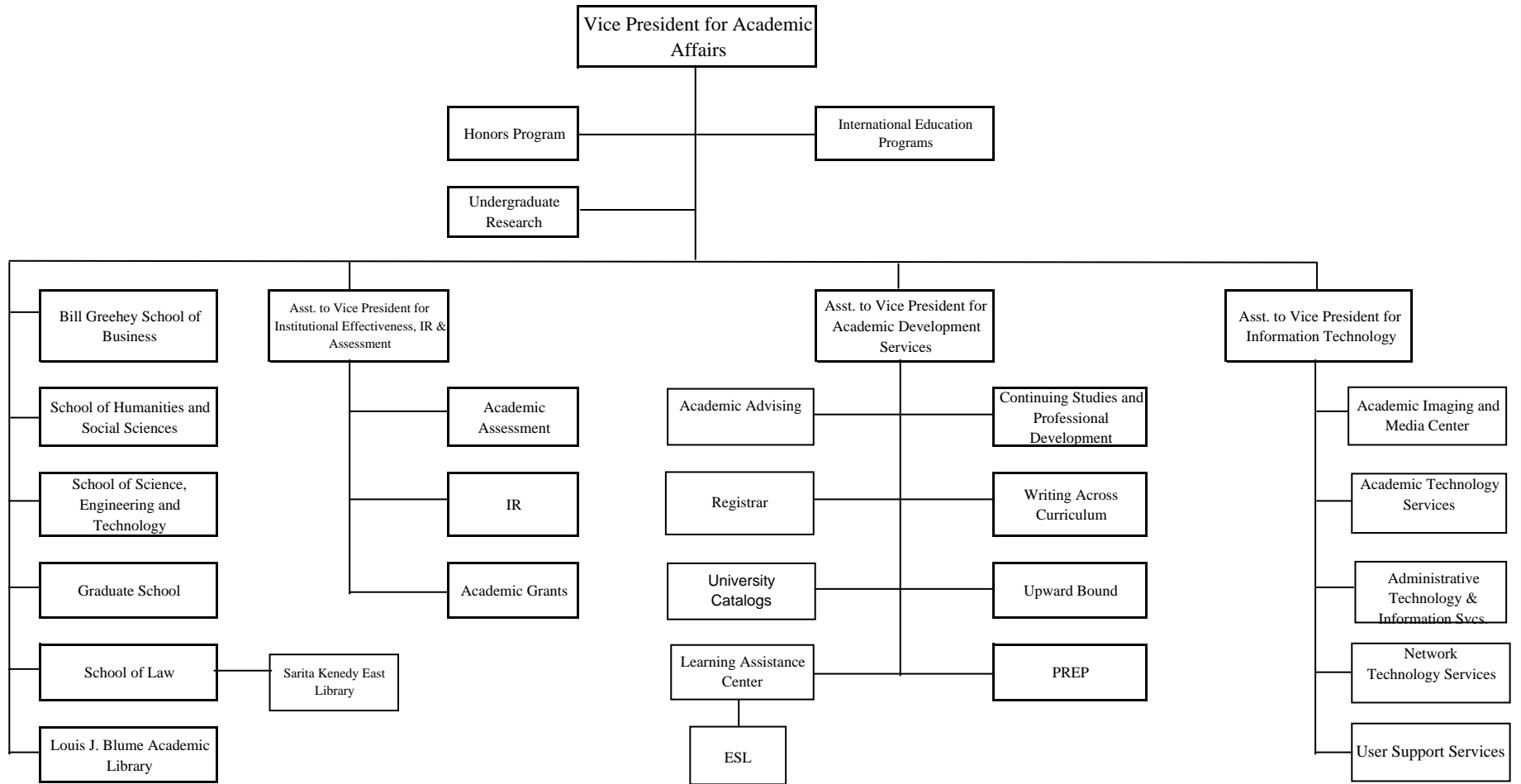
University Mission Statement

St. Mary's University, as a Catholic Marianist University, fosters the formation of people in faith and educates leaders for the common good through community, integrated liberal arts and professional education, and academic excellence.

Presidential Administration

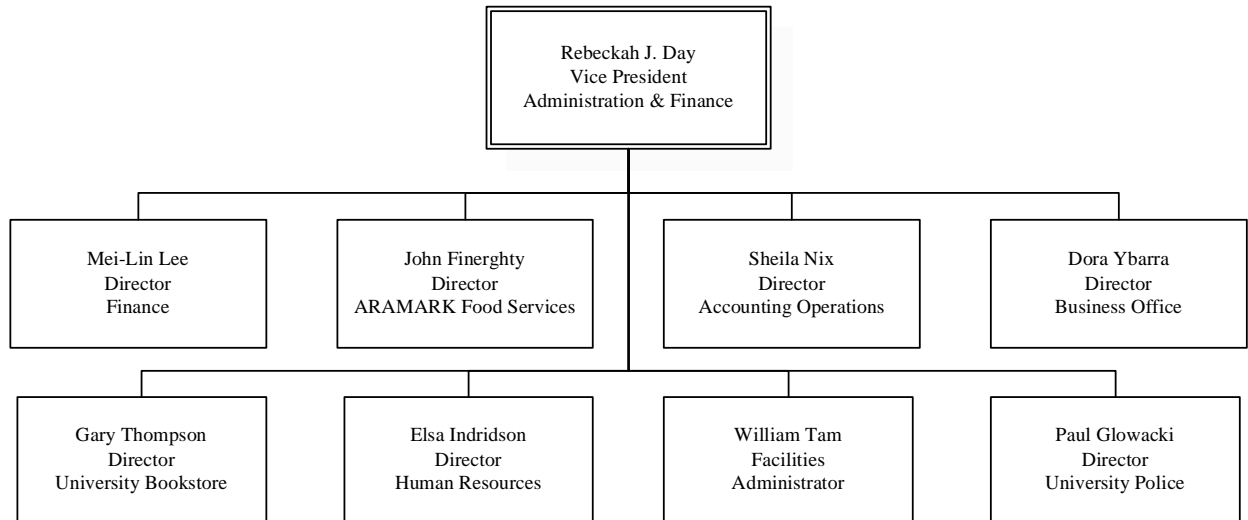


Academic Affairs



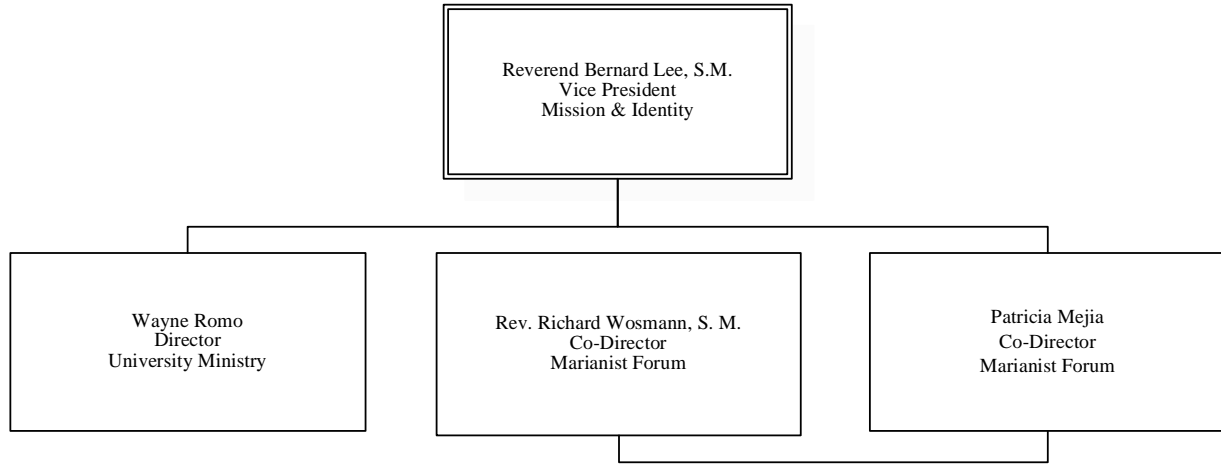
Source: Office of the Vice President for Academic Affairs

Administration & Finance



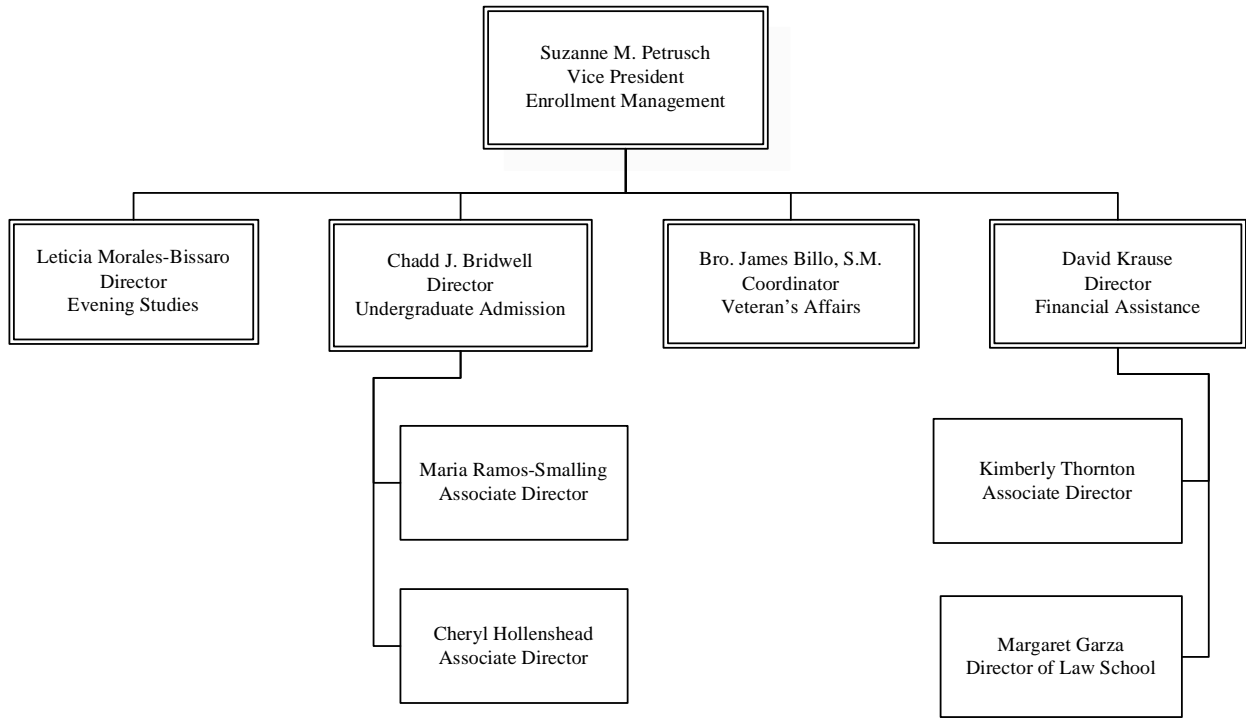
SOURCE: Office of the Vice President for Administration & Finance

Mission & Identity



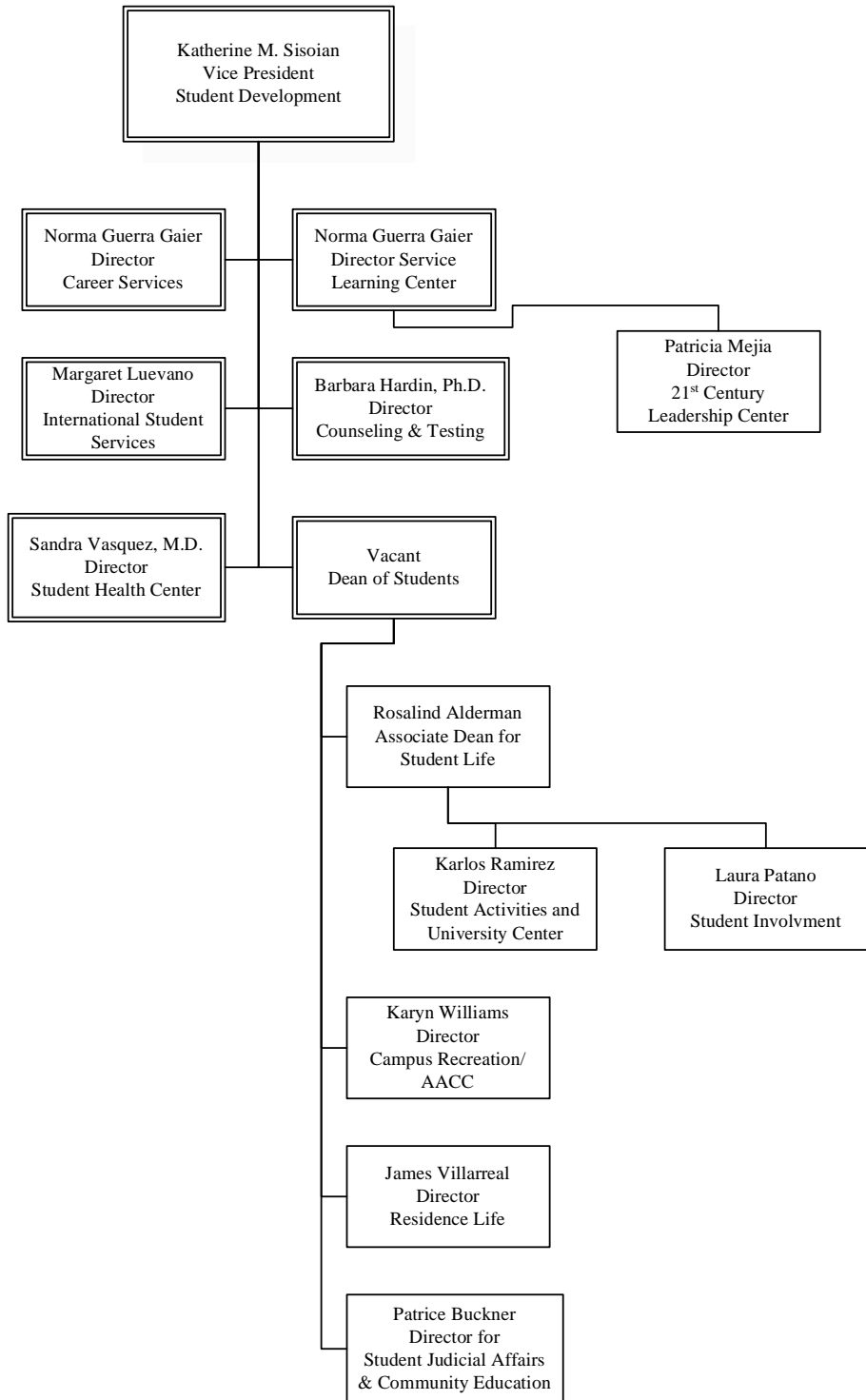
SOURCE: Office of the Vice President for Mission & Identity

Enrollment Management



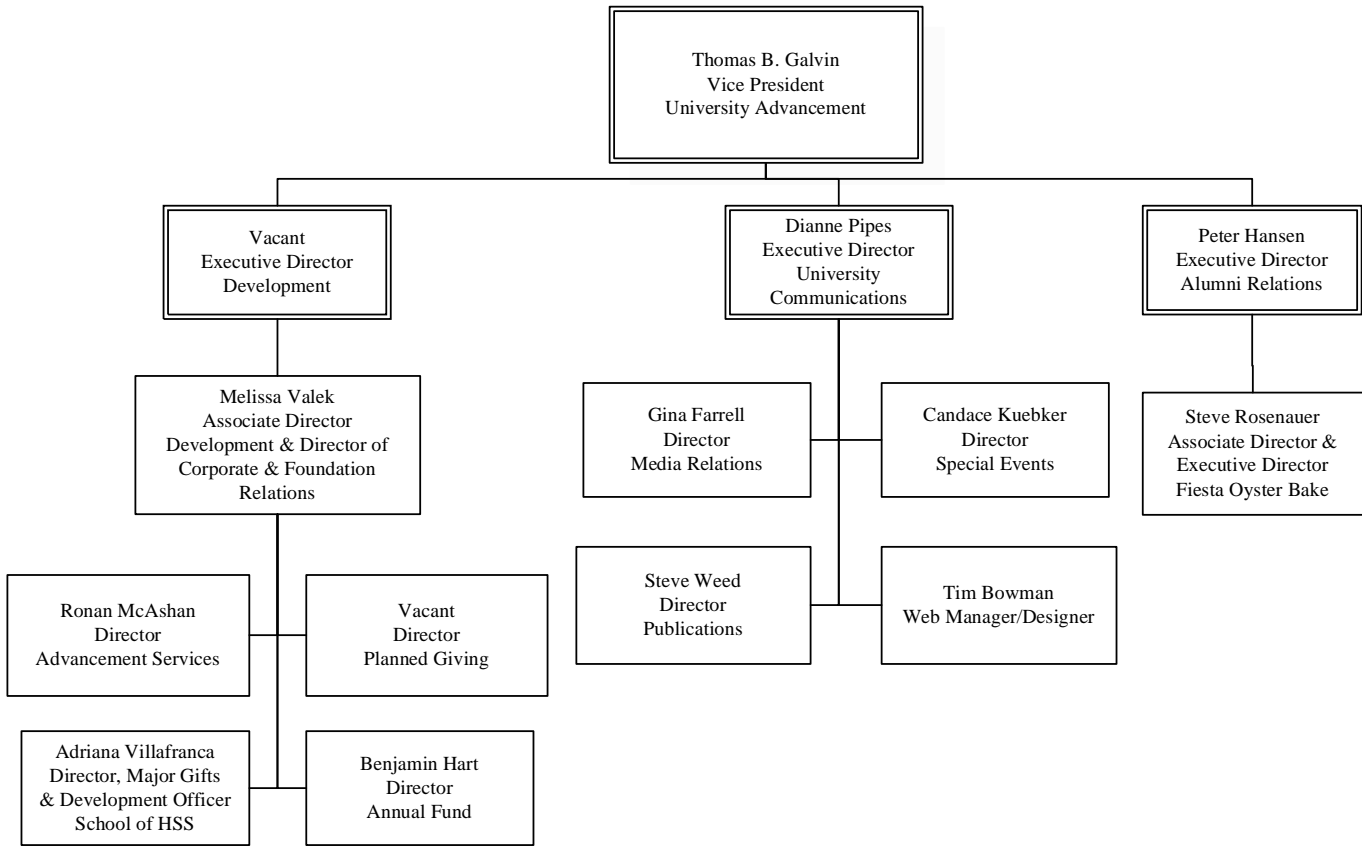
SOURCE: Office of the Vice President for Enrollment Management

Student Development



SOURCE: Office of the Vice President for Student Development

University Advancement



SOURCE: Office of the Vice President for University Advancement

Table 1. Enrollment by Attendance Status and Program

Year	Program				
	Total	Undergraduates	Master's	Ph.D.	Law
Full-time/Part-time					
1997.....	4,203	2,620	743	61	779
1998.....	4,189	2,642	727	57	763
1999.....	4,065	2,543	707	55	760
2000.....	4,137	2,618	733	53	733
2001.....	4,136	2,613	758	62	703
2002.....	4,243	2,725	744	63	711
2003.....	4,118	2,582	741	66	729
2004.....	4,110	2,531	711	65	803
2005.....	3,925	2,385	697	60	783
2006.....	3,904	2,400	698	57	749
Full-time					
1997.....	3,251	2,263	202	31	755
1998.....	3,240	2,278	186	30	746
1999.....	3,139	2,212	160	24	743
2000.....	3,240	2,331	166	24	719
2001.....	3,244	2,342	182	26	694
2002.....	3,403	2,481	189	37	696
2003.....	3,333	2,370	203	38	722
2004.....	3,282	2,289	176	32	785
2005.....	3,170	2,185	195	24	766
2006.....	3,169	2,205	203	27	734
Part-time					
1997.....	952	357	541	30	24
1998.....	949	364	541	27	17
1999.....	926	331	547	31	17
2000.....	897	287	567	29	14
2001.....	892	271	576	36	9
2002.....	840	244	555	26	15
2003.....	785	212	538	28	7
2004.....	828	242	535	33	18
2005.....	755	200	502	36	17
2006.....	735	195	495	30	15

SOURCE: University Data Mart

Table 2. Enrollment by Program and Gender

Year	Gender		
	Total	Men	Women
Undergraduates			
1997.....	2,620	1,082	1,538
1998.....	2,642	1,072	1,570
1999.....	2,543	1,064	1,479
2000.....	2,618	1,067	1,551
2001.....	2,613	1,073	1,540
2002.....	2,725	1,111	1,614
2003.....	2,582	1,062	1,520
2004.....	2,531	1,042	1,489
2005.....	2,385	955	1,430
2006.....	2,400	963	1,437
Graduate-Master's			
1997.....	743	385	358
1998.....	727	377	350
1999.....	707	355	352
2000.....	733	372	361
2001.....	758	372	386
2002.....	744	350	394
2003.....	741	350	391
2004.....	711	321	390
2005.....	697	314	383
2006.....	698	316	382
Graduate-Ph.D.			
1997.....	61	21	40
1998.....	57	21	36
1999.....	55	20	35
2000.....	53	16	37
2001.....	62	15	47
2002.....	63	16	47
2003.....	66	16	50
2004.....	65	11	54
2005.....	60	8	52
2006.....	57	7	50
Law			
1997.....	779	408	371
1998.....	763	393	370
1999.....	760	400	360
2000.....	733	378	355
2001.....	703	368	335
2002.....	711	376	335
2003.....	729	420	309
2004.....	803	470	333
2005.....	783	449	334
2006.....	749	430	319

SOURCE: University Data Mart

Table 3. Enrollment by Program, Gender and Attendance Status

Year	Total	Men		Women	
		Full-time	Part-time	Full-time	Part-time
Undergraduates					
1997.....	2,620	942	140	1,322	216
1998.....	2,642	935	137	1,343	227
1999.....	2,543	927	137	1,284	195
2000.....	2,618	956	111	1,375	176
2001.....	2,613	979	94	1,363	177
2002.....	2,725	1,017	94	1,464	150
2003.....	2,582	974	88	1,396	124
2004.....	2,531	945	97	1,344	145
2005.....	2,385	883	72	1,302	128
2006.....	2,400	877	86	1,328	109
Graduate-Master's					
1997.....	743	86	299	116	242
1998.....	727	72	305	114	236
1999.....	707	70	285	90	262
2000.....	733	73	299	93	268
2001.....	758	74	298	108	278
2002.....	744	75	275	114	280
2003.....	741	86	264	117	274
2004.....	711	72	249	104	286
2005.....	697	79	235	116	267
2006.....	698	78	238	125	257
Graduate-Ph.D.					
1997.....	61	9	12	22	18
1998.....	57	11	10	19	17
1999.....	55	8	12	16	19
2000.....	53	7	9	17	20
2001.....	62	3	12	23	24
2002.....	63	11	5	26	21
2003.....	66	8	8	30	20
2004.....	65	5	6	27	27
2005.....	60	2	6	22	30
2006.....	57	-	7	27	23
Law					
1997.....	779	399	9	356	15
1998.....	763	382	11	364	6
1999.....	760	390	10	353	7
2000.....	733	369	9	350	5
2001.....	703	361	7	333	2
2002.....	711	368	8	328	7
2003.....	729	417	3	305	4
2004.....	803	463	7	322	11
2005.....	783	440	9	326	8
2006.....	749	422	8	312	7

SOURCE: University Data Mart

Table 4. Undergraduate Enrollment by Classification, Attendance Status and Gender

Year	Total			Gender	
	Total	Full-time	Part-time	Men	Women
Freshmen					
1997.....	784	727	57	314	470
1998.....	874	806	68	350	524
1999.....	718	680	38	303	415
2000.....	879	849	30	367	512
2001.....	791	764	27	355	436
2002.....	886	865	21	371	515
2003.....	718	695	23	297	421
2004.....	669	636	33	287	382
2005.....	673	651	22	268	405
2006.....	756	728	28	283	473
Sophomores					
1997.....	516	447	69	198	318
1998.....	511	453	58	196	315
1999.....	508	458	50	215	293
2000.....	486	439	47	198	288
2001.....	622	570	52	261	361
2002.....	565	528	37	249	316
2003.....	586	557	29	246	340
2004.....	515	488	27	209	306
2005.....	449	419	30	182	267
2006.....	481	445	36	200	281
Juniors					
1997.....	578	513	65	257	321
1998.....	498	434	64	197	301
1999.....	586	516	70	233	353
2000.....	529	463	66	208	321
2001.....	480	431	49	179	301
2002.....	580	528	52	233	347
2003.....	581	528	53	243	338
2004.....	575	528	47	226	349
2005.....	516	481	35	208	308
2006.....	489	451	38	186	303
Seniors					
1997.....	687	569	118	296	391
1998.....	709	576	133	306	403
1999.....	688	556	132	296	392
2000.....	689	576	113	276	413
2001.....	686	573	113	266	420
2002.....	663	555	108	247	416
2003.....	680	588	92	271	409
2004.....	752	634	118	310	442
2005.....	732	630	102	290	442
2006.....	655	575	80	285	370

SOURCE: University Data Mart

Table 4. Undergraduate Enrollment by Classification, Attendance Status and Gender (continued)

Year	Total		Gender		
	Total	Full-time	Part-time	Men	Women
Post-Baccalaureates					
1997.....	55	8	47	17	38
1998.....	50	9	41	23	27
1999.....	43	2	41	17	26
2000.....	35	4	31	18	17
2001.....	34	4	30	12	22
2002.....	31	5	26	11	20
2003.....	17	2	15	5	12
2004.....	20	3	17	10	10
2005.....	15	4	11	7	8
2006.....	19	6	13	9	10

SOURCE: University Data Mart

Table 5. Credit hours by Attendance Status and Program

Year	Program				
	Total	Undergraduates	Master's	Ph.D.'s	Law
Full-time/Part-time					
1997.....	51,765	36,237	4,298	447	10,783
1998.....	52,124	36,861	4,108	424	10,731
1999.....	50,558	35,591	3,965	374	10,628
2000.....	51,849	37,041	4,059	368	10,381
2001.....	51,654	37,116	4,288	411	9,839
2002.....	53,647	39,004	4,249	491	9,903
2003.....	52,415	37,292	4,270	520	10,333
2004.....	52,028	36,381	3,934	468	11,245
2005.....	49,912	34,526	4,056	386	10,944
2006.....	49,845	34,830	4,109	383	10,523
Full-time					
1997.....	47,094	34,219	1,930	323	10,622
1998.....	47,514	34,770	1,763	324	10,657
1999.....	45,852	33,575	1,496	264	10,517
2000.....	47,473	35,340	1,589	264	10,280
2001.....	47,301	35,514	1,724	274	9,789
2002.....	49,469	37,498	1,773	391	9,807
2003.....	48,669	36,052	1,914	416	10,287
2004.....	47,998	34,892	1,662	328	11,116
2005.....	46,190	33,272	1,845	238	10,835
2006.....	46,241	33,620	1,919	273	10,429
Part-time					
1997.....	4,671	2,018	2,368	124	161
1998.....	4,610	2,091	2,345	100	74
1999.....	4,706	2,016	2,469	110	111
2000.....	4,376	1,701	2,470	104	101
2001.....	4,353	1,602	2,564	137	50
2002.....	4,178	1,506	2,476	100	96
2003.....	3,746	1,240	2,356	104	46
2004.....	4,030	1,489	2,272	140	129
2005.....	3,722	1,254	2,211	148	109
2006.....	3,604	1,210	2,190	110	94

SOURCE: University Data Mart

Table 6. Credit hours by Program, Gender and Attendance Status

Year	Men			Women	
	Total	Full-time	Part-time	Full-time	Part-time
Undergraduates					
1997.....	36,237	14,227	779	19,992	1,239
1998.....	36,861	14,318	807	20,452	1,284
1999.....	35,591	14,012	869	19,563	1,147
2000.....	37,041	14,546	649	20,794	1,052
2001.....	37,116	14,777	545	20,737	1,057
2002.....	39,004	15,414	567	22,084	939
2003.....	37,292	14,844	537	21,208	703
2004.....	36,381	14,510	588	20,382	901
2005.....	34,526	13,515	441	19,757	813
2006.....	34,830	13,364	518	20,256	692
Graduate-Master's					
1997.....	4,298	825	1,313	1,105	1,055
1998.....	4,108	693	1,314	1,070	1,031
1999.....	3,965	666	1,281	830	1,188
2000.....	4,059	690	1,240	899	1,230
2001.....	4,288	704	1,307	1,020	1,257
2002.....	4,249	700	1,182	1,073	1,294
2003.....	4,270	810	1,105	1,104	1,251
2004.....	3,934	675	1,019	987	1,253
2005.....	4,056	746	1,042	1,099	1,169
2006.....	4,109	736	1,048	1,183	1,142
Graduate-Ph.D.					
1997.....	447	97	52	226	72
1998.....	424	119	41	205	59
1999.....	374	86	44	178	66
2000.....	368	76	28	188	76
2001.....	411	34	48	240	89
2002.....	491	111	15	280	85
2003.....	520	90	28	326	76
2004.....	468	46	25	282	115
2005.....	386	18	30	220	118
2006.....	383	-	28	273	82
Law					
1997.....	10,783	5,615	46	5,007	115
1998.....	10,731	5,475	50	5,182	24
1999.....	10,628	5,531	60	4,986	51
2000.....	10,381	5,307	68	4,973	33
2001.....	9,839	4,940	170	4,619	110
2002.....	9,903	5,229	49	4,578	47
2003.....	10,333	5,942	21	4,345	25
2004.....	11,245	6,565	47	4,551	82
2005.....	10,944	6,236	59	4,599	50
2006.....	10,523	5,982	46	4,447	48

SOURCE: University Data Mart

Table 7. Credit Hours by Undergraduate Classification, Attendance Status and Gender

Year	Attendance Status			Gender	
	Total	Full-time	Part-time	Men	Women
Freshmen					
1997.....	10,923	10,647	276	4,359	6,564
1998.....	12,245	11,887	358	5,072	7,173
1999.....	10,208	10,003	205	4,317	5,891
2000.....	12,570	12,416	154	5,317	7,253
2001.....	11,446	11,301	145	5,167	6,279
2002.....	12,889	12,769	120	5,399	7,490
2003.....	10,347	10,224	123	4,262	6,085
2004.....	9,636	9,446	190	4,154	5,482
2005.....	9,672	9,540	132	3,886	5,786
2006.....	11,015	10,850	165	4,111	6,904
Sophomores					
1997.....	7,261	6,839	422	2,785	4,476
1998.....	7,393	7,088	305	2,806	4,587
1999.....	7,202	6,933	269	3,025	4,177
2000.....	6,914	6,658	256	2,842	4,072
2001.....	8,963	8,673	290	3,759	5,204
2002.....	8,196	7,972	224	3,642	4,554
2003.....	8,609	8,447	162	3,647	4,962
2004.....	7,527	7,370	157	3,055	4,472
2005.....	6,600	6,430	170	2,678	3,922
2006.....	7,009	6,790	219	2,856	4,153
Juniors					
1997.....	8,296	7,953	343	3,710	4,586
1998.....	7,134	6,769	365	2,872	4,262
1999.....	8,444	8,010	434	3,386	5,058
2000.....	7,527	7,135	392	3,039	4,488
2001.....	6,980	6,693	287	2,647	4,333
2002.....	8,496	8,146	350	3,390	5,106
2003.....	8,499	8,186	313	3,579	4,920
2004.....	8,476	8,183	293	3,362	5,114
2005.....	7,643	7,431	212	3,107	4,536
2006.....	7,248	6,994	254	2,764	4,484
Seniors					
1997.....	9,416	8,670	746	4,036	5,380
1998.....	9,773	8,898	875	4,198	5,575
1999.....	9,509	8,602	907	4,082	5,427
2000.....	9,798	9,067	731	3,872	5,926
2001.....	9,514	8,795	719	3,668	5,846
2002.....	9,223	8,535	688	3,471	5,752
2003.....	9,741	9,165	576	3,866	5,875
2004.....	10,631	9,857	774	4,475	6,156
2005.....	10,501	9,816	685	4,229	6,272
2006.....	9,412	8,906	506	4,073	5,339

SOURCE: University Data Mart

Table 7. Credit Hours by Undergraduate Classification, Attendance Status and Gender
(continued)

Year	Attendance Status			Gender	
	Total	Full-time	Part-time	Men	Women
Post-Baccalaureates					
1997.....	341	110	231	116	225
1998.....	316	128	188	177	139
1999.....	228	27	201	71	157
2000.....	232	64	168	125	107
2001.....	213	52	161	81	132
2002.....	200	76	124	79	121
2003.....	96	30	66	27	69
2004.....	111	36	75	52	59
2005.....	110	55	55	56	54
2006.....	146	80	66	78	68

SOURCE: University Data Mart

Table 8. Full-Time Equivalent (FTE) by Program

Year	Program				
	Total	Undergraduates	Master's	Ph.D.	Law
1997.....	3,736	2,431	498	44	763
1998.....	3,727	2,452	479	43	753
1999.....	3,639	2,380	467	38	754
2000.....	3,715	2,473	475	37	730
2001.....	3,720	2,475	503	43	699
2002.....	3,862	2,607	499	50	706
2003.....	3,749	2,473	498	51	727
2004.....	3,721	2,413	460	50	798
2005.....	3,581	2,290	471	43	777
2006.....	3,566	2,305	477	41	743

*Rounded to nearest whole number

Definition of Full-time equivalent (FTE)

Undergraduate: Headcount FT students + (credit hours PT students/12)

Master's/Ph.D.: Headcount FT students + (credit hours PT students/8)

Law: Headcount FT students + (credit hours PT students/10)

Total: FTE undergraduate + FTE Master's/Ph.D. + FTE Law

SOURCE: University Data Mart

Table 9. Race and Ethnicity by Program

Race and Ethnicity	Year						
	2000	2001	2002	2003	2004	2005	2006
Total	4,137	4,136	4,243	4,118	4,110	3,925	3,904
African-American.....	144	149	141	143	149	137	139
American Indian/AK Native...	17	16	18	19	22	14	12
Asian/Pacific Islander.....	106	92	96	92	103	110	108
Hispanic Origin.....	2,357	2,374	2,393	2,290	2,181	2,083	2,069
White, non-Hispanic.....	1,351	1,341	1,406	1,375	1,389	1,282	1,219
Unknown/Other.....	26	31	35	47	118	183	239
International.....	136	133	154	152	148	116	118
Undergraduates	2,618	2,613	2,725	2,582	2,531	2,385	2,400
African-American.....	78	90	85	85	87	92	103
American Indian/AK Native...	12	10	8	3	6	3	3
Asian/Pacific Islander.....	71	58	60	57	66	69	65
Hispanic Origin.....	1,775	1,791	1,864	1,779	1,724	1,660	1,655
White, Non-Hispanic.....	572	562	586	540	516	462	470
Unknown/Other.....	8	16	16	10	14	12	20
International.....	102	86	106	107	118	87	84
Master's	733	758	744	741	711	697	698
African-American.....	34	32	40	42	46	25	20
American Indian/AK Native...	3	3	5	6	8	3	1
Asian/Pacific Islander.....	18	22	19	15	13	15	16
Hispanic Origin.....	300	306	296	302	266	251	235
White, Non-Hispanic.....	330	346	334	306	263	232	200
Unknown/Other.....	16	11	11	29	92	150	200
International.....	32	38	39	41	23	21	26
Ph.D.	53	62	63	66	65	60	57
African-American.....	3	3	1	1	1	1	1
American Indian/AK Native...	-	-	-	-	-	-	-
Asian/Pacific Islander.....	-	-	-	-	-	-	1
Hispanic Origin.....	11	11	14	16	19	21	23
White, Non-Hispanic.....	36	41	35	37	32	24	21
Unknown/Other.....	2	4	8	8	10	11	9
International.....	1	3	5	4	3	3	2
Law	733	703	711	729	803	783	749
African-American.....	29	24	15	15	15	19	15
American Indian/AK Native...	2	3	5	9	8	8	8
Asian/Pacific Islander.....	17	12	17	20	24	26	26
Hispanic Origin.....	271	266	219	193	172	151	156
White, Non-Hispanic.....	413	392	451	492	578	564	528
Unknown/Other.....	-	-	-	-	2	10	10
International.....	1	6	4	-	4	5	6

Note: Racial/ethnic designations are provided for United States citizens and resident aliens. Non-resident aliens (Internationals) are not included in any racial/ethnic designation. Internationals are listed to provide a complete enrollment review. See *Data Terms*.

SOURCE: University Data Mart

Table 10. Percentages: Race and Ethnicity by Program

Race and Ethnicity	Year						
	2000	2001	2002	2003	2004	2005	2006
Total	100.0	100.0	100.0	100.0	100.0	100.0	100.0
African-American.....	3.5	3.6	3.3	3.5	3.6	3.5	3.6
American Indian/AK Native..	0.4	0.4	0.4	0.5	0.5	0.4	0.3
Asian/Pacific Islander.....	2.6	2.2	2.3	2.2	2.5	2.8	2.8
Hispanic Origin.....	57.0	57.4	56.4	55.6	53.1	53.1	53.0
White, Non-Hispanic.....	32.7	32.4	33.1	33.4	33.8	32.7	31.2
Unknown/Other.....	0.6	0.7	0.8	1.1	2.9	4.7	6.1
International.....	3.3	3.2	3.6	3.7	3.6	3.0	3.0
Undergraduates	100.0	100.0	100.0	100.0	100.0	100.0	100.0
African-American.....	3.0	3.4	3.1	3.3	3.4	3.9	4.3
American Indian/AK Native..	0.5	0.4	0.3	0.1	0.2	0.1	0.1
Asian/Pacific Islander.....	2.7	2.2	2.2	2.2	2.6	2.9	2.7
Hispanic Origin.....	67.8	68.5	68.4	68.9	68.1	69.6	69.0
White, Non-Hispanic.....	21.8	21.5	21.5	20.9	20.4	19.4	19.6
Unknown/Other.....	0.3	0.6	0.6	0.4	0.6	0.5	0.8
International.....	3.9	3.3	3.9	4.1	4.7	3.6	3.5
Master's	100.0	100.0	100.0	100.0	100.0	100.0	100.0
African-American.....	4.6	4.2	5.4	5.7	6.5	3.6	2.9
American Indian/AK Native..	0.4	0.4	0.7	0.8	1.1	0.4	0.1
Asian/Pacific Islander.....	2.5	2.9	2.6	2.0	1.8	2.2	2.3
Hispanic Origin.....	40.9	40.4	39.8	40.8	37.4	36.0	33.7
White, Non-Hispanic.....	45.0	45.6	44.9	41.3	37.0	33.3	28.7
Unknown/Other.....	2.2	1.5	1.5	3.9	12.9	21.5	28.7
International.....	4.4	5.0	5.2	5.5	3.2	3.0	3.7
Ph.D.	100.0	100.0	100.0	100.0	100.0	100.0	100.0
African-American.....	5.7	4.8	1.6	1.5	1.5	1.7	1.8
American Indian/AK Native..	-	-	-	-	-	-	-
Asian/Pacific Islander.....	-	-	-	-	-	-	2
Hispanic Origin.....	20.8	17.7	22.2	24.2	29.2	35.0	40.4
White, Non-Hispanic.....	67.9	66.1	55.6	56.1	49.2	40.0	36.8
Unknown/Other.....	3.8	6.5	12.7	12.1	15.4	18.3	15.8
International.....	1.9	4.8	7.9	6.1	4.6	5.0	3.5
Law	100.0	100.0	100.0	100.0	100.0	100.0	100.0
African-American.....	4.0	3.4	2.1	2.1	1.9	2.4	2.0
American Indian/AK Native..	0.3	0.4	0.7	1.2	1.0	1.0	1.1
Asian/Pacific Islander.....	2.3	1.7	2.4	2.7	3.0	3.3	3.5
Hispanic Origin.....	37.0	37.8	30.8	26.5	21.4	19.3	20.8
White, Non-Hispanic.....	56.3	55.8	63.4	67.5	72.0	72.0	70.5
Unknown/Other.....	-	-	-	-	0.2	1.3	1.3
International.....	0	1	1	-	0.5	0.6	0.8

Note: Percentages calculated by Office of Institutional Research. International students are included in the denominator.

Table 11. Geographic Origin by Program

	Year					
	2001	2002	2003	2004	2005	2006
Total	4,136	4,243	4,118	4,110	3,925	3,904
United States not Texas.....	152	174	187	184	215	234
Texas not Bexar County.....	1,647	1,681	1,685	1,737	1,732	1,708
Bexar County.....	2,248	2,234	2,094	2,041	1,862	1,831
International.....	89	154	152	148	116	118
Citizens w/ foreign residency..	n/a	n/a	n/a	n/a	n/a	12
Not reported	n/a	n/a	n/a	n/a	n/a	1
Undergraduate						
Total.....	2,613	2,725	2,582	2,531	2,385	2,400
United States not Texas.....	105	109	105	92	93	112
Texas not Bexar County.....	1,128	1,132	1,047	1,007	1,004	1,013
Bexar County.....	1,310	1,378	1,323	1,314	1,201	1,179
International.....	70	106	107	118	87	84
Citizens w/ foreign residency..	n/a	n/a	n/a	n/a	n/a	12
Master's						
Total.....	758	744	741	711	697	698
United States not Texas.....	18	30	35	43	55	53
Texas not Bexar County.....	194	167	197	207	226	216
Bexar County.....	536	508	468	438	395	403
International.....	10	39	41	23	21	26
Ph.D.						
Total.....	62	63	66	65	60	57
United States not Texas.....	1	3	3	1	1	3
Texas not Bexar County.....	12	18	20	25	25	23
Bexar County.....	45	37	39	36	31	29
International.....	4	5	4	3	3	2
Law						
Total.....	703	711	729	803	783	749
United States not Texas.....	28	30	44	48	66	66
Texas not Bexar County.....	313	366	421	498	477	456
Bexar County.....	357	311	264	253	235	220
International.....	5	4	0	4	5	6
Not reported.....	0	0	0	0	0	1

Note: "United States not Texas" includes students from U.S. territories and Puerto Rico.

n/a = not available

SOURCE: University Data Mart

Table 12. Geographic Origin by Region, State and Territory, Fall 2006

Region and state/territory	Program			
	Undergraduate	Masters	Ph.D.	Law
United States	2,304	672	55	742
Northeast	9	5	0	3
Connecticut.....	2	0	0	0
Maine.....	0	0	0	0
Massachusetts.....	1	0	0	0
New Hampshire.....	1	0	0	0
New Jersey.....	2	0	0	1
New York.....	1	4	0	2
Pennsylvania.....	1	1	0	0
Rhode Island.....	1	0	0	0
Vermont.....	0	0	0	0
Midwest	33	7	0	8
Illinois.....	6	3	0	1
Indiana.....	1	1	0	2
Kansas.....	1	0	0	1
Michigan.....	1	1	0	1
Minnesota.....	1	0	0	0
Missouri.....	13	1	0	2
Ohio.....	6	0	0	1
Wisconsin.....	4	1	0	0
South	2,215	646	54	694
Alabama.....	0	2	0	0
Arkansas.....	2	0	0	2
District of Columbia.....	0	0	0	0
Florida.....	5	5	0	2
Georgia.....	2	0	0	1
Kentucky.....	0	3	0	2
Louisiana.....	2	6	1	1
Maryland.....	3	2	0	1
Mississippi.....	0	1	0	1
North Carolina.....	0	1	0	1
Oklahoma.....	1	1	0	2
South Carolina.....	1	0	0	0
Tennessee.....	3	1	1	1
Texas.....	2,193	619	52	676
Virginia.....	3	5	0	4

Table 12. Geographic Origin by Region, State and Territory, Fall 2006 (cont'd)

Region and state/territory	Program			
	Undergraduate	Masters	Ph.D.	Law
West	47	14	1	37
Alaska.....	1	0	0	1
Arizona.....	7	2	1	6
California.....	9	6	0	6
Colorado.....	5	2	0	6
Hawaii.....	2	0	0	0
Idaho.....	0	0	0	0
Montana.....	0	0	0	1
Nevada.....	4	0	0	3
New Mexico.....	12	0	0	7
Oregon.....	4	1	0	2
Utah.....	0	2	0	3
Washington.....	3	1	0	2
Territories and Commonwealth	2	0	0	0
Guam.....	1	0	0	0
Puerto Rico.....	1	0	0	0
International	84	26	2	6

SOURCE: University Data Mart

Table 13. Countries Represented in Total Enrollment

Country	Country
Azerbaijan	Indonesia
Bolivia	Japan
Brazil	Jordan
Bahrain	Korea
Canada	Mexico
Cayman Islands	Mozambique
Chile	Nigeria
China	Nicaragua
Colombia	Nepal
Croatia	Palestinian Territory
Czechoslovakia	Peru
Germany	Philippines
Dominican Republic	Saudi Arabia
Kenya	Suriname
Guatemala	Turkey
Ghana	Trinidad & Tobago
Hong Kong	Taiwan
Honduras	Ukraine
Italy	Vietnam
India	Zimbabwe
Iran	

SOURCE: University Data Mart

Table 14. Religious Preference by Program, Fall 2006

Religious Preferences	Program					
	Total	Percent	Undergraduate	Master's	Ph.D.	Law
Total.....	3,904	100.0	2,400	698	57	749
Agnostic.....	3	0.1	-	3	-	-
Anglican.....	2	0.1	-	1	-	1
Baptist.....	108	2.8	75	28	2	3
Buddhist.....	2	0.1	-	2	-	-
Roman Catholic.....	2,040	52.3	1,640	326	26	48
Christian.....	265	6.8	163	92	4	6
Church of Christ.....	1	0.0	1	-	-	-
Episcopal.....	22	0.6	7	12	1	2
Greek Orthodox.....	2	0.1	-	2	-	-
Hinduism.....	13	0.3	6	5	-	2
Islamic.....	7	0.2	4	3	-	-
Jewish.....	8	0.2	1	7	-	-
Latter Day Saints.....	10	0.3	4	6	-	-
Lutheran.....	35	0.9	18	15	2	-
Methodist.....	39	1.0	23	14	2	-
Muslim.....	10	0.3	7	2	-	1
No Answer.....	743	19.0	27	29	13	674
None.....	231	5.9	118	103	2	8
Other.....	281	7.2	254	24	1	2
Pentecostal.....	13	0.3	9	3	1	-
Presbyterian.....	16	0.4	5	9	1	1
Protestant.....	49	1.3	37	10	2	-
Seventh Day Adventist.....	4	0.1	1	2	-	1

SOURCE: University Data Mart

Table 15. Enrollment by School

Year	Total	Bill Greehey School of Business		Humanities and Social Sciences		Science, Engineering and Technology	
		Enrolled	row %	Enrolled	row %	Enrolled	row %
1997.....	2,620	699	26.7	1,145	43.7	776	29.6
1998.....	2,642	696	26.3	1,146	43.4	800	30.3
1999.....	2,543	695	27.3	1,053	41.4	795	31.3
2000.....	2,618	738	28.2	1,092	41.7	788	30.1
2001.....	2,613	725	27.7	1,081	41.4	807	30.9
2002.....	2,725	700	25.7	1,194	43.8	831	30.5
2003.....	2,582	679	26.3	1,152	44.6	751	29.1
2004.....	2,531	658	26.0	1,157	45.7	716	28.3
2005.....	2,385	591	24.8	1,097	46.0	697	29.2
2006.....	2,400	573	23.9	1,101	45.9	726	30.2

SOURCE: University Data Mart

Table 16. Undergraduate Enrollment: Top 20 Majors, Fall 2006

	Number	% of Undergraduate Enrollment
Biology.....	382	15.92
Psychology.....	159	6.63
Political Science.....	124	5.17
English-Communication Arts.....	124	5.17
Criminal Justice.....	108	4.50
Accounting.....	108	4.50
International Business.....	92	3.83
Exercise and Sport Science.....	90	3.75
General Business.....	83	3.46
Marketing.....	70	2.92
English.....	61	2.54
International Relations.....	60	2.50
Undecided Business.....	58	2.42
Humanities (Undecided).....	57	2.38
Corporate Finance Management.....	56	2.33
Electrical Engineering.....	52	2.17
Biochemistry.....	49	2.04
Criminology.....	46	1.92
Mathematics.....	41	1.71
Interdisciplinary Reading.....	39	1.63

SOURCE: University Data Mart

Table 17. Enrollment by Major: Bill Greehey School of Business

	Year						
	2000	2001	2002	2003	2004	2005	2006
Total	738	725	700	679	658	591	573
Accounting.....	109	109	108	118	117	120	108
Corporate Finance Mgmt.....	70	68	73	57	54	48	56
Entrepreneurial Studies.....	25	21	29	31	26	28	24
Finance.....	-	-	7	1	3	2	8
Financial Services/Risk Mgmt...	28	25	25	34	33	19	19
General Business.....	78	71	76	92	75	71	83
Human Resources.....	27	31	28	29	26	22	15
Information Systems Mgmt.....	63	65	52	37	28	17	11
International Business.....	113	120	109	100	98	90	92
Management.....	44	40	31	27	41	34	29
Marketing.....	93	83	86	96	97	86	70
Middle Management.....	n/a	1	n/a	n/a	n/a	n/a	n/a
Undecided Business.....	88	91	76	57	60	54	58

SOURCE: University Data Mart

Table 18. Percentage by Major: Bill Greehey School of Business

	Year						
	2000	2001	2002	2003	2004	2005	2006
	col %	col %	col %	col %	col %	col %	col %
Total	100.0	100.0	100.0	100.0	100.0	100.0	100.0
Accounting.....	14.8	15.0	15.4	17.4	17.8	20.3	18.8
Corporate Finance Mgmt.....	9.5	9.4	10.4	8.4	8.2	8.1	9.8
Entrepreneurial Studies.....	3.4	2.9	4.1	4.6	4.0	4.7	4.2
Finance.....	-	-	1.0	0.1	0.5	0.3	1.4
Financial Services/Risk Mgmt...	3.8	3.4	3.6	5.0	5.0	3.2	3.3
General Business.....	10.6	9.8	10.9	13.5	11.4	12.0	14.5
Human Resources.....	3.7	4.3	4.0	4.3	4.0	3.7	2.6
Information Systems Mgmt.....	8.5	9.0	7.4	5.4	4.3	2.9	1.9
International Business.....	15.3	16.6	15.6	14.7	14.9	15.2	16.1
Management.....	6.0	5.5	4.4	4.0	6.2	5.8	5.1
Marketing.....	12.6	11.4	12.3	14.1	14.7	14.6	12.2
Middle Management.....	n/a	0.1	n/a	n/a	n/a	n/a	n/a
Undecided Business.....	11.9	12.6	10.9	8.4	9.1	9.1	10.1

Note. Percentages calculated by Office of Institutional Research

n/a = not applicable

Table 19. Enrollment by Major: Humanities and Social Sciences

	Year						
	2000	2001	2002	2003	2004	2005	2006
Total	1,092	1,081	1,194	1,152	1,157	1,096	1,101
Broad History.....	5	2	1	-	-	-	-
Broad Political Science.....	2	1	-	-	-	-	-
Criminal Justice.....	84	92	96	96	87	88	108
Criminology.....	19	17	26	37	39	43	46
Economics.....	17	14	12	13	11	10	11
Elementary Education.....	23	25	33	17	20	7	3
English.....	42	41	59	64	75	58	61
English-Communications.....	120	109	121	105	125	138	124
English-I Teacher Certification.....	4	4	4	-	-	-	-
English-II Teacher Certification.....	4	4	2	-	-	-	-
English-Sec Teacher Cert IV.....	2	2	3	2	1	1	1
Exercise and Sport Science.....	57	61	75	73	68	80	90
French.....	-	-	-	-	-	-	1
History.....	22	33	29	38	33	30	34
Human Services.....	3	2	1	1	-	-	-
Interdisciplinary							
Art.....	1	-	-	-	-	-	-
English.....	4	5	6	2	-	-	-
English Language Arts/Reading....	n/a	n/a	n/a	n/a	n/a	13	14
Exercise and Sport Science.....	1	1	-	-	-	-	-
History.....	2	3	-	-	-	-	-
Reading.....	30	29	31	48	52	47	39
Spanish.....	1	1	1	-	-	-	-
International Relations.....	47	51	58	61	67	65	60
Multinational Organization Studies..	17	14	14	15	13	13	12
Music.....	32	31	35	39	45	37	31
Organizational Administration.....	15	13	13	10	8	5	3
Philosophy.....	14	11	13	5	9	10	20
Political Science.....	135	129	134	142	152	134	124
Pre-Law.....	40	26	37	19	18	10	9
Psychology.....	145	145	142	152	130	156	159
Public Justice.....	14	4	5	2	n/a	n/a	n/a
Social Science/Humanities.....	n/a	n/a	n/a	n/a	4	6	12
Sociology.....	27	30	36	33	34	23	27
Spanish.....	6	10	14	11	12	18	11
Speech Communications.....	16	14	15	15	20	14	12
Teacher Certification.....	4	4	3	1	-	-	-
Theology.....	15	10	6	8	9	15	18
Undecided*	122	143	169	143	125	75	71

n/a = not applicable

*Undecided Humanities enrollment number includes non-degree seeking students.

Table 20. Percentage by Major, Humanities and Social Sciences

	Year						
	2000	2001	2002	2003	2004	2005	2006
Total	100.0	100.0	100.0	100.0	100.0	100.0	100.0
Broad History.....	0.5	0.2	0.1	0.0	0.0	0.0	0.0
Broad Political Science.....	0.2	0.1	0.0	0.0	0.0	0.0	0.0
Criminal Justice.....	7.7	8.5	8.0	8.3	7.5	8.0	9.8
Criminology.....	1.7	1.6	2.2	3.2	3.4	3.9	4.2
Economics.....	1.6	1.3	1.0	1.1	1.0	0.9	1.0
Elementary Education.....	2.1	2.3	2.8	1.5	1.7	0.6	0.3
English.....	3.8	3.8	4.9	5.6	6.5	5.3	5.5
English-Communications.....	11.0	10.1	10.1	9.1	10.8	12.6	11.3
English-I Teacher Certification.....	0.4	0.4	0.3	0.0	0.0	0.0	0.0
English-II Teacher Certification.....	0.4	0.4	0.2	0.0	0.0	0.0	0.0
English-Sec Teacher Cert IV.....	0.2	0.2	0.3	0.2	0.1	0.1	0.1
Exercise and Sport Science.....	5.2	5.6	6.3	6.3	5.9	7.3	8.2
French.....	-	-	-	-	-	-	0.1
History.....	2.0	3.1	2.4	3.3	2.9	2.7	3.1
Human Services.....	0.3	0.2	0.1	0.1	0.0	0.0	0.0
Interdisciplinary							
Art.....	0.1	0.0	0.0	0.0	0.0	0.0	0.0
English.....	0.4	0.5	0.5	0.2	0.0	0.0	0.0
English Language Arts/Reading.....	0.0	0.0	0.0	0.0	0.0	1.2	1.3
Exercise & Sports Science.....	0.1	0.1	0.0	0.0	0.0	0.0	0.0
History.....	0.2	0.3	0.0	0.0	0.0	0.0	0.0
Reading.....	2.7	2.7	2.6	4.2	4.5	4.3	3.5
Spanish.....	0.1	0.1	0.1	0.0	0.0	0.0	0.0
International Relations.....	4.3	4.7	4.9	5.3	5.8	5.9	5.4
Multinational Organization Studies...	1.6	1.3	1.2	1.3	1.1	1.2	1.1
Music.....	2.9	2.9	2.9	3.4	3.9	3.4	2.8
Organizational Administration.....	1.4	1.2	1.1	0.9	0.7	0.5	0.3
Philosophy.....	1.3	1.0	1.1	0.4	0.8	0.9	1.8
Political Science.....	12.4	11.9	11.2	12.3	13.1	12.2	11.3
Pre-Law.....	3.7	2.4	3.1	1.6	1.6	0.9	0.8
Psychology.....	13.3	13.4	11.9	13.2	11.2	14.2	14.4
Public Justice.....	1.3	0.4	0.4	0.2	n/a	n/a	n/a
Social Science/Humanities.....	0.0	0.0	0.0	0.0	0.3	0.5	1.1
Sociology.....	2.5	2.8	3.0	2.9	2.9	2.1	2.5
Spanish.....	0.5	0.9	1.2	1.0	1.0	1.6	1.0
Speech Communications.....	1.5	1.3	1.3	1.3	1.7	1.3	1.1
Teacher Certification.....	0.4	0.4	0.3	0.1	0.0	0.0	0.0
Theology.....	1.4	0.9	0.5	0.7	0.8	1.4	1.6
Undecided.....	11.2	13.2	14.2	12.4	10.8	6.8	6.4

Note. Percentages calculated by Office of Institutional Research

Table 21. Enrollment by Major, Science, Engineering and Technology

	Year						
	2000	2001	2002	2003	2004	2005	2006
Total	788	807	831	751	716	697	726
Applied Physics.....	0	0	0	0	1	0	0
Biochemistry.....	71	74	73	71	63	42	49
Biology.....	368	365	379	372	338	358	375
Biophysics.....	0	0	5	7	9	7	3
Chemistry.....	24	27	34	31	29	22	17
Computer Engineering.....	55	60	53	45	32	36	27
Computer Information Systems.....	19	23	14	10	13	5	5
Computer Science/Applied Systems.....	15	18	15	14	6	7	12
Computer Science.....	57	59	50	43	48	35	30
Earth Science.....	2	3	5	1	2	1	0
Electrical Engineering.....	39	37	41	40	37	30	52
Engineering.....	21	15	22	10	13	21	16
Engineering Computer Applications.....	n/a	n/a	n/a	n/a	1	0	0
Engineering Management.....	n/a	n/a	n/a	n/a	n/a	n/a	3
Engineering Science.....	8	7	8	8	11	10	13
Geology.....	4	7	3	2	0	0	0
Information Technology.....	n/a	n/a	n/a	n/a	4	8	14
Industrial Engineering.....	29	34	48	38	41	38	34
Interdisciplinary							
Biology.....	1	1	0	0	0	0	0
Life/Earth Science.....	1	4	1	2	2	1	1
Math.....	10	7	12	9	4	3	2
Mathematics.....	25	36	31	26	33	35	41
Mathematical Sciences.....	n/a	n/a	n/a	n/a	1	0	0
Physics.....	8	8	9	7	10	9	11
Software Engineering.....	n/a	n/a	n/a	n/a	2	2	0
Software Engineering and							
Computer Applications.....	17	11	16	9	10	9	8
Undecided Sciences.....	14	11	12	6	6	18	13

n/a = not applicable

SOURCE: University Data Mart

Table 22. Percentage by Major, Science, Engineering and Technology

	Year						
	2000	2001	2002	2003	2004	2005	2006
Total	100.0	100.0	100.0	100.0	100.0	100.0	100.0
Applied Physics.....	0.0	0.0	0.0	0.0	0.1	0.0	0.0
Biochemistry.....	9.0	9.2	8.8	9.5	8.8	6.0	6.7
Biology.....	46.7	45.2	45.6	49.5	47.2	51.4	51.7
Biophysics.....	0.0	0.0	0.6	0.9	1.3	1.0	0.4
Chemistry.....	3.0	3.3	4.1	4.1	4.1	3.2	2.3
Computer Engineering.....	7.0	7.4	6.4	6.0	4.5	5.2	3.7
Computer Information Systems.....	2.4	2.9	1.7	1.3	1.8	0.7	0.7
Computer Science/Applied Systems.....	1.9	2.2	1.8	1.9	0.8	1.0	1.7
Computer Science.....	7.2	7.3	6.0	5.7	6.7	5.0	4.1
Earth Science.....	0.3	0.4	0.6	0.1	0.3	0.1	0.0
Electrical Engineering.....	4.9	4.6	4.9	5.3	5.2	4.3	7.2
Engineering.....	2.7	1.9	2.6	1.3	1.8	3.0	2.2
Engineering Computer Applications.....	0.0	0.0	0.0	0.0	0.1	0.0	0.0
Engineering Management.....	n/a	n/a	n/a	n/a	n/a	n/a	0.4
Engineering Science.....	1.0	0.9	1.0	1.1	1.5	1.4	1.8
Geology.....	0.5	0.9	0.4	0.3	0.0	0.0	0.0
Information Technology.....	0.0	0.0	0.0	0.0	0.6	1.1	1.9
Industrial Engineering.....	3.7	4.2	5.8	5.1	5.7	5.5	4.7
Interdisciplinary							
Biology.....	0.1	0.1	0.0	0.0	0.0	0.0	0.0
Life/Earth Science.....	0.1	0.5	0.1	0.3	0.3	0.1	0.1
Math.....	1.3	0.9	1.4	1.2	0.6	0.4	0.3
Mathematics.....	3.2	4.5	3.7	3.5	4.6	5.0	5.6
Mathematical Sciences.....	0.0	0.0	0.0	0.0	0.1	0.0	0.0
Physics.....	1.0	1.0	1.1	0.9	1.4	1.3	1.5
Software Engineering.....	0.0	0.0	0.0	0.0	0.3	0.3	0.0
Software Engineering and							
Computer Applications.....	2.2	1.4	1.9	1.2	1.4	1.3	1.1
Undecided Sciences.....	1.8	1.4	1.4	0.8	0.8	2.6	1.8

Note. Percentages calculated by Office of Institutional Research

Table 23. Enrollment by Graduate Program

	Year						
	2000	2001	2002	2003	2004	2005	2006
Total	733	758	744	741	711	697	698
Accounting.....	17	18	14	11	12	14	14
Business Administration.....	142	137	128	112	109	98	94
Catholic School Leadership.....	22	15	9	4	16	7	4
Communication Studies.....	27	27	22	36	35	37	32
Computer Information Systems.....	105	95	71	67	46	34	29
Computer Science.....	19	21	15	19	14	17	14
Counseling.....	73	63	67	68	87	87	75
Economics.....	5	3	7	7	2	0	0
Education.....	0	13	15	8	2	6	3
Education Leadership.....	20	25	24	26	17	8	27
Electrical Engineering.....	13	16	23	24	18	22	22
Engineering Management.....	n/a	n/a	n/a	n/a	n/a	n/a	1
Engineering Systems Management.....	16	16	12	10	12	17	22
English-Communication Arts.....	2	6	2	1	0	0	0
English Literature and Language.....	18	12	16	19	12	19	19
History.....	4	3	0	1	0	0	0
Industrial Engineering.....	9	10	13	13	11	14	17
International Relations.....	67	94	108	109	110	115	130
Justice Administration.....	15	9	5	0	0	0	0
Pastoral Ministry.....	5	13	7	10	9	9	11
Political Science.....	10	19	22	18	13	13	15
Psychology.....	56	62	45	51	45	54	64
Public Administration.....	23	22	18	21	31	34	31
Reading.....	13	17	32	30	42	32	23
Software Engineering.....	24	16	10	10	10	6	5
Theology.....	28	26	59	66	58	54	46

SOURCE: University Data Mart

Table 24. Percentage in Graduate Program

	Year						
	2000	2001	2002	2003	2004	2005	2006
Total	733	758	744	741	711	697	698
Accounting.....	2.3	2.4	1.9	1.5	1.7	2.0	2.0
Business Administration.....	19.4	18.1	17.2	15.1	15.3	14.1	13.5
Catholic School Leadership.....	3.0	2.0	1.2	0.5	2.3	1.0	0.6
Communication Studies.....	3.7	3.6	3.0	4.9	4.9	5.3	4.6
Computer Information Systems.....	14.3	12.5	9.5	9.0	6.5	4.9	4.2
Computer Science.....	2.6	2.8	2.0	2.6	2.0	2.4	2.0
Counseling.....	10.0	8.3	9.0	9.2	12.2	12.5	10.7
Economics.....	0.7	0.4	0.9	0.9	0.3	0.0	0.0
Education.....	0.0	1.7	2.0	1.1	0.3	0.9	0.4
Education Leadership.....	2.7	3.3	3.2	3.5	2.4	1.1	3.9
Electrical Engineering.....	1.8	2.1	3.1	3.2	2.5	3.2	3.2
Engineering Management.....	n/a	n/a	n/a	n/a	n/a	n/a	0.1
Engineering Systems Management.....	2.2	2.1	1.6	1.3	1.7	2.4	3.2
English-Communication Arts.....	0.3	0.8	0.3	0.1	0.0	0.0	0.0
English Literature and Language.....	2.5	1.6	2.2	2.6	1.7	2.7	2.7
History.....	0.5	0.4	0.0	0.1	0.0	0.0	0.0
Industrial Engineering.....	1.2	1.3	1.7	1.8	1.5	2.0	2.4
International Relations.....	9.1	12.4	14.5	14.7	15.5	16.5	18.6
Justice Administration.....	2.0	1.2	0.7	n/a	n/a	n/a	n/a
Pastoral Ministry.....	0.7	1.7	0.9	1.3	1.3	1.3	1.6
Political Science.....	1.4	2.5	3.0	2.4	1.8	1.9	2.1
Psychology.....	7.6	8.2	6.0	6.9	6.3	7.7	9.2
Public Administration.....	3.1	2.9	2.4	2.8	4.4	4.9	4.4
Reading.....	1.8	2.2	4.3	4.0	5.9	4.6	3.3
Software Engineering.....	3.3	2.1	1.3	1.3	1.4	0.9	0.7
Theology.....	3.8	3.4	7.9	8.9	8.2	7.7	6.6

Note. Percentages calculated by Office of Institutional Research

Table 25. Enrollment by Doctoral Program

	Year						
	2000	2001	2002	2003	2004	2005	2006
Total	53	62	63	66	65	60	57
Counseling.....	2	n/a	n/a	n/a	n/a	n/a	n/a
Counselor Education and Supervision.....	30	34	39	40	39	32	36
Marriage and Family Therapy.....	21	28	24	26	26	28	21

SOURCE: University Data Mart

Table 26. Percentage in Doctoral Program

	Year						
	2000	2001	2002	2003	2004	2005	2006
Total	100.0	100.0	100.0	100.0	100.0	100.0	100.0
Counseling.....	3.8	n/a	n/a	n/a	n/a	n/a	n/a
Counselor Education and Supervision.....	56.6	54.8	61.9	60.6	60.0	53.3	63.2
Marriage and Family Therapy.....	39.6	45.2	38.1	39.4	40.0	46.7	36.8

Note. Percentages calculated by Office of Institutional Research

n/a = not applicable

Table 27. First-time, First-year Undergraduates Who Applied, Admitted and Enrolled

	Year						
	2000	2001	2002	2003	2004	2005	2006
Applications							
Total.....	1,656	1,674	1,664	1,464	1,619	1,942	1,998
Men.....	582	663	598	523	609	681	720
Women.....	1,074	1,011	1,066	941	1,010	1,261	1,278
Offered Admission							
Total.....	1,441	1,364	1,417	1,189	1,300	1,400	1,450
Men.....	521	541	518	429	485	488	526
Women.....	920	823	899	760	815	912	924
Enrolled							
Total.....	659	536	667	472	466	494	548
Men.....	257	236	269	179	187	180	201
Women.....	402	300	398	293	279	314	347

Table 28. Yield Rates

	Year						
	2000	2001	2002	2003	2004	2005	2006
Admitted who applied							
Acceptance Rate.....	87	82	85	81	80	72	73
Men.....	90	82	87	82	80	72	73
Women.....	86	81	84	81	81	72	72
Enrolled							
Yield Rate.....	46	39	48	40	36	35	38
Men.....	49	44	52	42	39	37	38
Women.....	44	36	44	39	34	34	38

Note: Enrollment numbers include full- and part-time students. Data prior to Fall 2005 may include first-time students in both day and evening studies.

SOURCE: Office of Undergraduate Admission

Table 29. First-time Freshmen: High School Percentile

High School Percentile	Year						
	2000	2001	2002	2003	2004	2005	2006
Entering Students	659	536	667	472	466	494	548
Total with rank.....	627	506	625	448	434	463	496
Total with no rank.....	32	27	42	24	32	31	51
Top 10%.....	203	159	179	126	128	148	160
Percent.....	32.4	30.0	28.6	28.0	30.0	32.0	32.0
Top Quarter.....	402	334	370	259	270	291	315
Percent.....	64.1	63.0	59.2	58.0	62.0	62.8	64.0
Top Half.....	562	443	525	377	384	412	427
Percent.....	89.6	87.6	84.0	84.2	88.5	89.0	86.0
Bottom Half.....	65	63	100	71	50	51	69
Percent.....	10.4	12.4	16.0	15.8	11.5	11.0	14.0
Bottom Quarter.....	12	17	32	17	10	15	15
Percent.....	1.9	3.0	5.1	4.0	2.0	3.2	3.0

Table 30. First-time Freshmen: Mean/Median Test Scores

	Year			
	2005		2006	
	Mean	Median	Mean	Median
Number Submitting.....	333		456	
SAT Verbal.....	520	510	519	510
SAT Math.....	530	520	531	520
SAT Total.....	1050	1040	1050	1040
Number Submitting.....	290		171	
ACT Composite	22	21	22	22
ACT English	22	21	22	21
ACT Math	21	20	22	22

Table 31. First-time Freshmen by Type of High School

	Fall 2006	
Texas.....	498	100.0
Private.....	115	23.09
Public.....	381	76.51
Other.....	2	0.40
Outside Texas.....	50	100.0
Private.....	10	20.00
Public.....	35	70.00
Other.....	5	10.00

SOURCE: Office of Undergraduate Admission

Table 32. First-time Freshmen: Race and Ethnicity

Race and Ethnicity	Year						
	2000	2001	2002	2003	2004	2005	2006
Total	659	536	667	472	466	494	548
African-American.....	9	27	13	9	12	22	18
American Indian/AK Native.....	3	-	2	-	-	-	-
Asian/Pacific Islander.....	21	10	17	11	18	15	13
Hispanic Origin.....	461	379	469	324	325	374	399
White, non-Hispanic.....	143	92	138	109	93	74	100
Unknown/Other.....	-	7	-	-	-	1	7
International.....	22	21	28	19	18	8	11

Table 33. First-time Freshmen: Race and Ethnicity (Percentage)

Race and Ethnicity	Year						
	2000	2001	2002	2003	2004	2005	2006
Total	100.0	100.0	100.0	100.0	100.0	100.0	100.0
African-American.....	1.4	5.0	1.9	1.9	2.6	4.5	3.3
American Indian/AK Native.....	0.5	-	0	-	-	-	-
Asian/Pacific Islander.....	3.2	1.9	2.5	2.3	3.9	3.0	2.4
Hispanic Origin.....	70.0	70.7	70.3	68.6	69.7	75.7	72.8
White, Non-Hispanic.....	21.7	17.2	20.7	23.1	20.0	15.0	18.2
Unknown/Other.....	-	1	-	-	-	0.2	1.3
International.....	3.3	3.9	4.2	4.0	3.9	1.6	2.0

Table 34. First-time Freshmen by Geographic Representation

Geographic Representation	Year						
	2000	2001	2002	2003	2004	2005	2006
Total	640	534	667	472	466	494	548
Bexar County.....	263	229	279	216	213	203	237
Texas not Bexar County.....	334	261	331	212	212	265	261
United States/Territories.....	29	23	29	24	23	17	36
U.S. Citizens w/Foreign Residency..	n/a	n/a	n/a	n/a	n/a	n/a	3
International.....	14	21	28	20	18	9	11

Table 35. First-time Freshmen by Geographic Representation (Percentage)

Geographic Representation	Year						
	2000	2001	2002	2003	2004	2005	2006
Total	100.0	100.0	100.0	100.0	100.0	100.0	100.0
Bexar County.....	41.1	42.9	41.8	45.8	45.7	41.1	43.2
Texas not Bexar County.....	52.2	48.9	49.6	44.9	45.5	53.6	47.6
United States/Territories.....	4.5	4.3	4.3	5.1	4.9	3.4	6.6
U.S. Citizens w/Foreign Residency..	n/a	n/a	n/a	n/a	n/a	n/a	0.5
International.....	2.2	3.9	4.2	4.2	3.9	1.8	2.0

n/a = data not available

Note: Racial/ethnic designations are provided for United States citizens and resident aliens. Non-resident aliens (Internationals) are not included in any racial/ethnic designation. Internationals are listed to provide a complete enrollment review.

SOURCE: University Data Mart and Office of Undergraduate Admission

Table 36. First-Time Freshmen: Entering Major by School

Majors by School	Percent		
	Enrollment	Within School	Entering Class
Bill Greehey School of Business			
Total	105	100.0	100.0
Accounting.....	17	16.2	3.1
Corporate Finance Management.....	3	2.9	0.5
Entrepreneurial Studies.....	5	4.8	0.9
Finance.....	2	1.9	0.4
General Business.....	22	21.0	4.0
Human Resources.....	2	1.9	0.4
International Business.....	17	16.2	3.1
Marketing.....	10	9.5	1.8
Undecided Business.....	27	25.7	4.9
Humanities & Social Sciences			
Total	228	100.0	
Criminal Justice.....	28	12.3	5.1
Criminology.....	10	4.4	1.8
Economics.....	1	0.4	0.2
Elementary Education.....	3	1.3	0.5
English.....	13	5.7	2.4
English-Communication Arts.....	26	11.4	4.7
Exercise and Sport Science.....	16	7.0	2.9
French.....	1	0.4	0.2
History.....	6	2.6	1.1
Humanities (undecided).....	18	7.9	3.3
Interdisciplinary Reading.....	2	0.9	0.4
International Relations.....	13	5.7	2.4
Interdisciplinary English Lang Arts/Reading.....	3	1.3	0.5
Multinational Organization Studies.....	4	1.8	0.7
Music.....	3	1.3	0.5
Philosophy.....	5	2.2	0.9
Political Science.....	21	9.2	3.8
Pre-Law.....	6	2.6	1.1
Psychology.....	37	16.2	6.7
Sociology.....	4	1.8	0.7
Spanish.....	1	0.4	0.2
Speech Communication.....	1	0.4	0.2
Theology.....	6	2.6	1.1

Note. Entering major is the major on record with the Registrar's Office on the 12th Day of the Fall semester.

The number of students by major may differ from earlier reports taken from admission applications

Percentages calculated by the Office of Institutional Research

SOURCE: University Data Mart

Table 36. First-Time Freshmen: Entering Major by School (continued)

Majors by School	Percent		
	Enrollment	Percent Within School	Percent Entering Class
Science, Engineering & Technology			
Total	218	100.0	
Biochemistry.....	16	7.3	2.9
Biology.....	114	52.3	20.7
Chemistry.....	5	2.3	0.9
Computer Engineering.....	14	6.4	2.5
Computer Science/Applied System.....	2	0.9	0.4
Computer Science.....	9	4.1	1.6
Electrical Engineering.....	19	8.7	3.4
Engineering.....	9	4.1	1.6
Engineering Science.....	5	2.3	0.9
Industrial Engineering.....	6	2.8	1.1
Information Technology.....	3	1.4	0.5
Mathematics.....	4	1.8	0.7
Physics.....	2	0.9	0.4
Sciences (undecided).....	7	3.2	1.3
Software Engineering and Computer Application.....	3	1.4	0.5

SOURCE: University Data Mart

Table 37. Transfer Students Who Applied, Admitted and Enrolled

	Year						
	2000	2001	2002	2003	2004	2005	2006
Applications							
Total.....	275	303	318	270	341	373	424
Men.....	132	127	138	112	146	169	165
Women.....	143	176	180	158	195	204	259
Offered Admission							
Total.....	197	230	231	201	232	237	249
Men.....	95	100	91	84	103	106	99
Women.....	102	130	140	117	129	131	150
Enrolled							
Total.....	134	149	150	130	144	138	139
Men.....	61	63	58	56	67	64	61
Women.....	73	86	92	73	77	74	78

SOURCE: Office of Undergraduate Admission

Table 38. Yield Rates

	Year						
	2000	2001	2002	2003	2004	2005	2006
Admitted who applied							
Acceptance Rate.....	72	76	73	74	68	64	59
Men.....	72	79	66	75	71	63	60
Women.....	71	74	78	74	66	64	58
Enrolled							
Yield Rate.....	68	65	65	64	62	58	56
Men.....	64	63	64	67	65	60	62
Women.....	72	66	66	62	60	57	52

SOURCE: Office of Undergraduate Admission

Table 39. Transfer Students: Race and Ethnicity

Race and Ethnicity	Year						
	2000	2001	2002	2003	2004	2005	2006
Total	128	121	150	129	144	138	139
African-American.....	7	4	10	13	8	11	9
American Indian/AK Native	3	2	0	0	0	0	1
Asian/Pacific Islander.....	2	4	4	3	3	3	4
Hispanic Origin.....	75	73	87	69	84	88	75
White, non-Hispanic.....	39	30	37	33	39	28	38
Unknown/Other.....	2	8	12	11	10	5	4
International.....	0	0	0	0	0	3	8

Table 40. Transfer Students: Entering College Grade Point Average

	Year					
	2000	2001	2002	2004	2005	2006
Total	128	149	150	144	138	139
3.5 - 4.0.....	24	22	26	29	26	24
3.1 - 3.49.....	21	30	25	22	27	14
2.8 - 3.09.....	19	19	20	20	32	17
2.4 - 2.79.....	28	30	32	20	17	15
2.0 - 2.39.....	13	27	21	14	10	6
< 2.0.....	23	21	26	4	4	1
Other.....	n/a	n/a	n/a	35	22	62

Note. 2003 data not available.

Table 41. Transfers: Entering Classification

	Fall 2006
Total	139
Freshmen.....	37
Sophomore.....	59
Junior.....	42
Senior.....	0
Post-Baccalaureate.....	1

Table 42. Transfers by Type of Institution

	Fall 2006
Texas	103
Community/Junior College.....	66
Alamo Community College District.....	45
4-year Institutions.....	37
Private.....	9
Public.....	28
Outside Texas	36
Community/Junior College.....	0
4-year Institutions.....	34
Private.....	7
Public.....	27
Other.....	2

Note: Racial/ethnic designations are provided for United States citizens and resident aliens. Non-resident aliens (Internationals) are not included in any racial/ethnic designation. Internationals are listed to provide a complete enrollment review.

SOURCE: Office of Undergraduate Admission and University Data Mart

Table 43. Law Students

	Year				
	2002	2003	2004	2005	2006
Admitted who applied					
Total.....	1,442	1,849	2,170	2,069	1,902
Men.....	770	1,059	1,176	1,115	1,008
Women.....	672	790	994	954	894
Offered Admission					
Total.....	703	719	685	769	764
Men.....	365	419	383	412	424
Women.....	338	300	302	357	340
Enrolled					
Total.....	282	306	295	267	260
Men.....	155	176	176	149	146
Women.....	127	130	119	118	114

Table 44. Yield Rates

	Year				
	2002	2003	2004	2005	2006
Admitted who applied					
Acceptance Rate.....	48	39	37	37	40
Men.....	47	40	33	37	42
Women.....	50	38	38	37	38
Enrolled					
Total.....	20	17	16	13	14
Men.....	20	17	15	13	14
Women.....	19	17	15	12	13

SOURCE: Law School-Office of Admission

Table 45. Retention Rates

	Year							
	1998	1999	2000	2001	2002	2003	2004	2005
Total entering class	499	485	656	534	667	470	464	493
Enrolled 2nd year (#).....	393	392	515	427	532	369	362	394
Retention rate (%).....	78.8	80.8	78.5	80.0	79.8	78.5	78.0	79.9
Not enrolled (%).....	21.2	19.2	21.5	20.0	20.2	21.5	22.0	20.1
Men	186	208	257	235	269	178	186	180
Enrolled 2nd year (#).....	143	172	191	180	214	141	142	136
Retention rate (%).....	76.9	82.7	74.3	76.6	79.6	79.2	76.3	75.6
Not enrolled (%).....	23.1	17.3	25.7	23.4	20.4	20.8	23.7	24.4
Women	313	277	399	299	398	292	278	313
Enrolled 2nd year (#).....	250	220	324	247	318	228	220	258
Retention rate (%).....	79.9	79.4	81.2	82.6	79.9	78.1	79.1	82.4
Not enrolled (%).....	20.1	20.6	18.8	17.4	20.1	21.9	20.9	17.6
White, non-Hispanic	115	101	143	92	138	109	93	73
Enrolled 2nd year (#).....	82	81	119	72	111	79	73	57
Retention rate (%).....	71.3	80.2	83.2	78.3	80.4	72.5	78.5	78.1
Not enrolled (%).....	28.7	19.8	16.8	21.7	19.6	27.5	21.5	21.9
Hispanic Origin	338	334	461	378	470	323	323	374
Enrolled 2nd year (#).....	274	265	355	301	372	256	246	299
Retention rate (%).....	81.1	79.3	77.0	79.6	79.1	79.3	76.2	79.9
Not enrolled (%).....	18.9	20.7	23.0	20.4	20.9	20.7	23.8	20.1

Table 46. Mean/Median One-Year Retention Rates
Fall 1998 to Fall 2005 Cohorts

	Median	Mean
All students	79.26	79.28
Men	76.74	77.64
Women	79.89	80.33
White/Caucasian	78.38	77.81
Hispanic	79.30	78.91

Source: University Data Mart

Figure 3. Median One-Year Retention Rates Fall 1998 to 2005 Cohorts

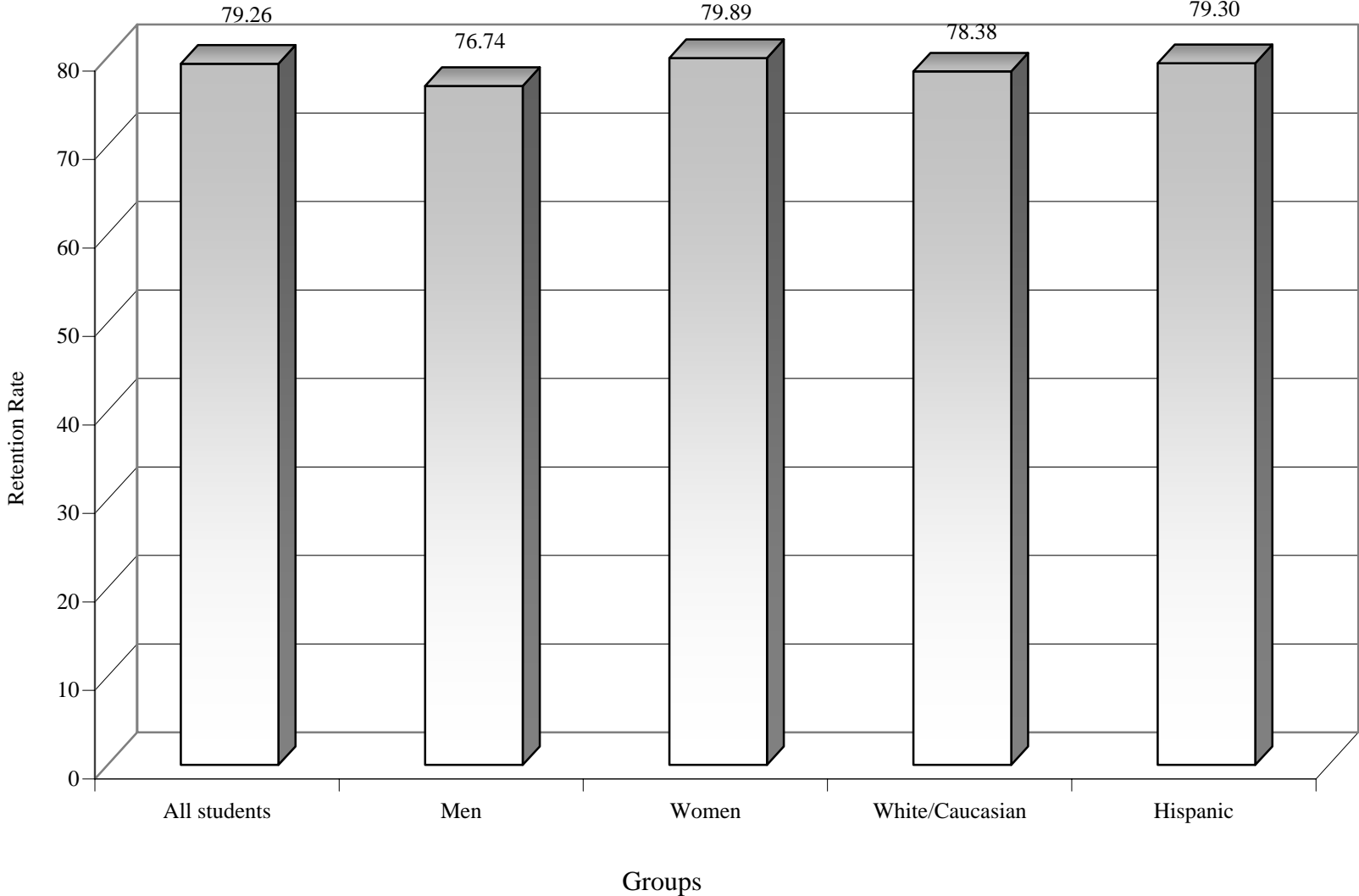


Table 47. Graduation and Persistence Rates: 1989 - 1999 Cohorts

All students - Graduation Rates	Year										
	1989	1990	1991	1992	1993	1994	1995	1996	1997	1998	1999
Graduated 4-years.....	33.57	29.03	31.47	28.3	31.1	29.70	27.21	34.9	35.5	29.00	34.00
Graduated 5-years.....	55.48	52.88	54.55	54.00	54.48	63.48	58.40	54.64	60.36	52.30	55.90
Graduated 6-years.....	59.21	58.25	56.41	58.20	59.20	65.63	62.61	60.55	63.30	57.00	60.40
All Students-Persistence											
% Still Enrolled after 4-years.....	28.44	32.01	27.97	31.57	29.13	35.6	36.90	28.8	31.20	28.30	28.90
% Still Enrolled after 5-years.....	5.59	6.96	4.90	7.54	7.04	3.70	6.13	6.11	5.52	6.61	7.22
% Still Enrolled after 6-years.....	2.33	1.19	1.86	3.3	1.2	2.20	1.75	2.56	2.17	2.80	3.71
All students - Graduation Rates Plus Persistence											
After 4 years.....	62.00	61.03	59.44	59.87	60.23	65.30	69.10	63.70	64.30	57.30	62.90
After 5 years.....	61.07	59.84	59.44	61.54	61.52	67.18	64.15	60.75	64.11	59.00	63.12
After 6 years.....	61.54	59.44	58.28	61.50	60.40	65.68	63.68	63.11	65.47	59.80	64.11
Men - Graduation Rates											
Graduated 4-years.....	26.38	22.61	26.04	22.33	21.26	30.77	18.44	29.74	25.51	26.34	25.96
Graduated 5-years.....	51.53	49.75	49.70	47.57	43.10	57.47	52.51	51.79	53.06	50.57	49.04
Graduated 6-years.....	57.06	54.27	52.07	50.00	50.00	62.44	56.98	55.38	57.14	55.38	58.17
Men - Persistence											
% Still Enrolled after 4-years.....	32.52	35.18	32.54	30.58	29.89	35.29	4.19	30.77	29.74	27.45	35.30
% Still Enrolled after 5-years.....	7.98	7.04	9.47	6.8	8.62	7.24	2.79	5.64	5.13	5.88	11.60
% Still Enrolled after 6-years.....	2.45	1.01	4.14	4.37	6.32	2.26	2.23	3.08	3.59	1.07	3.90
Women - Graduation Rates											
Graduated 4-years.....	37.97	33.22	35.00	35.44	41.18	31.69	34.69	39.10	38.59	31.31	40.07
Graduated 5-years.....	57.89	54.93	56.92	58.95	64.29	57.23	62.04	58.65	64.95	53.35	61.01
Graduated 6-years.....	60.53	60.86	58.46	64.21	66.39	61.23	65.27	64.10	67.20	57.19	62.09
Women - Persistence											
% Still Enrolled after 4-years.....	25.94	29.93	2.5	31.58	28.57	30.15	33.06	27.56	27.56	28.94	24.19
% Still Enrolled after 5-years.....	4.14	6.91	1.92	7.72	5.88	4.92	5.71	6.41	2.88	6.75	3.97
% Still Enrolled after 6-years.....	2.26	1.32	0.38	2.11	0.00	2.15	1.63	2.24	1.28	3.86	3.61

Table 48. Graduation and Persistence Rates: 1989-1999 Cohorts

White, non-Hispanic	Year										
	1989	1990	1991	1992	1993	1994	1995	1996	1997	1998	1999
Graduated 4-years.....	41.67	34.96	33.66	34.48	36.52	32.79	27.1	36.89	32.38	24.35	33.66
Graduated 5-years.....	56.82	50.41	57.43	51.72	62.61	54.10	62.62	55.74	60.00	47.83	57.43
Graduated 6-years.....	59.09	55.28	62.38	57.76	64.35	58.20	63.55	59.84	62.86	51.30	60.40
White, non-Hispanic-Persistence											
% Still Enrolled after 4-years...	19.7	22.76	28.71	24.14	30.43	27.05	40.19	26.23	31.43	25.22	26.73
% Still Enrolled after 5-years...	1.52	4.88	3.96	6.9	5.22	3.28	1.87	7.48	3.81	2.61	6.93
% Still Enrolled after 6-years...	0.76	0.00	0.99	6.03	0.00	0.00	0.93	1.64	0.95	0.87	3.96
Hispanic - Graduation Rates											
Graduated 4-years.....	29.70	25.43	28.67	26.57	32.65	30.79	27.51	35.56	32.96	33.43	33.53
Graduated 5-years.....	53.76	51.71	51.40	54.93	53.47	58.86	56.13	54.71	59.77	54.44	55.69
Graduated 6-years.....	57.89	57.43	53.15	58.81	58.78	65.12	60.90	59.88	63.13	58.28	59.58
Hispanic-Persistence											
% Still Enrolled after 4-years...	30.83	35.14	28.32	34.93	28.57	34.88	23.05	28.57	28.25	28.90	30.20
% Still Enrolled after 5-years...	6.77	7.71	4.90	7.46	7.76	7.08	8.18	6.08	4.24	8.30	7.50
% Still Enrolled after 6-years...	3.01	1.71	1.75	3.28	0.00	3.00	2.60	3.04	2.54	3.30	3.90

Table 49. Mean Graduation Rates After 6-years Enrolled (1989-1999)

	Group			
	All Students	Men	Women	White Hispanic
Graduated 4-years	31.25	25.03	36.21	33.50 30.62
Graduated 5-years	56.04	50.55	59.11	56.06 54.99
Graduated 6-years	60.07	55.35	62.50	59.55 59.36

Figure 4. Mean Graduation Rates After 6 Years Enrolled (1989-1999)

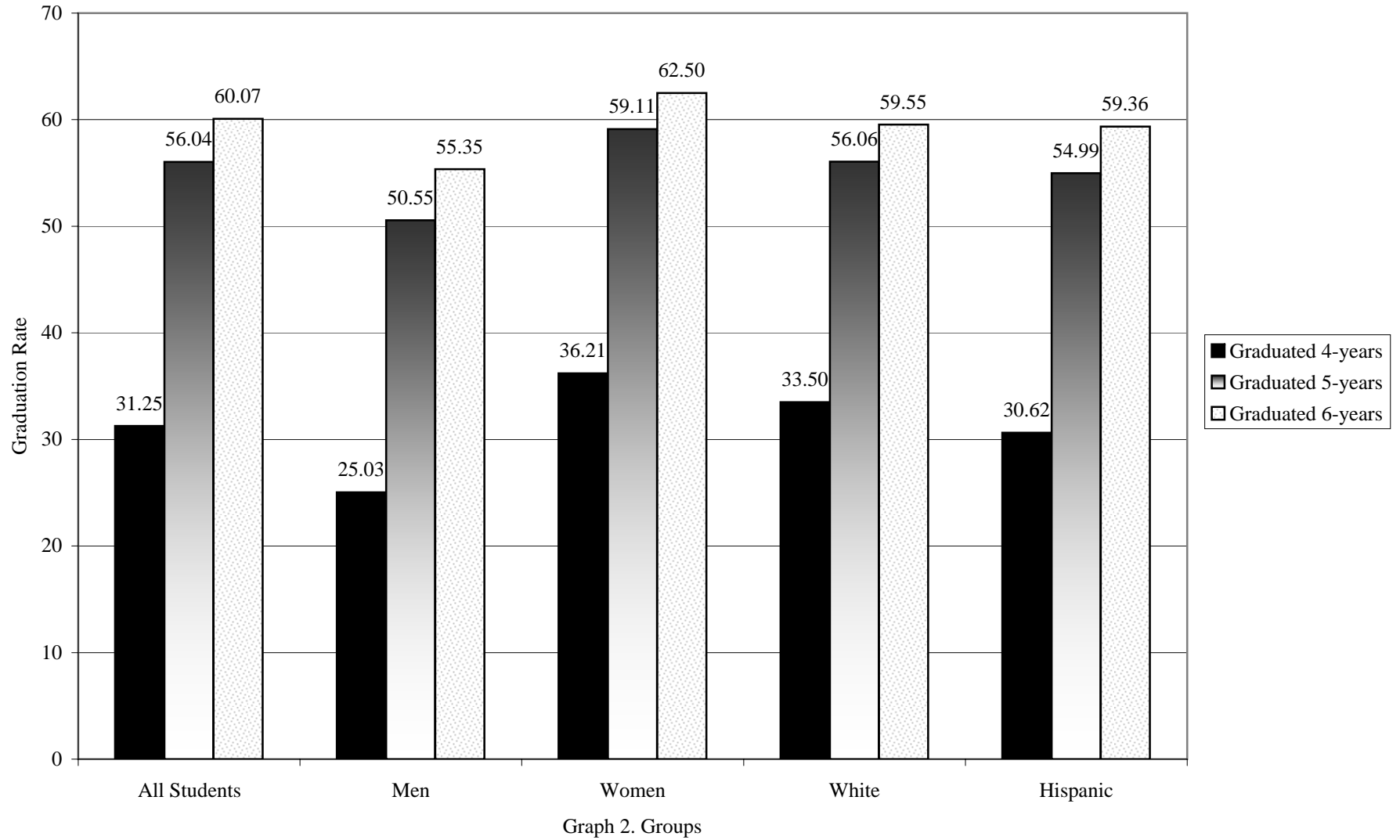


Table 50. 2005-2006 Degrees Conferred

	Gender		
	Total	Men	Women
Total	957	408	549
Bachelor's.....	508	185	323
Master's.....	199	80	119
Ph.D.....	8	1	7
Law.....	242	142	100

Table 51 . 2005-2006 Degrees Awarded by Type and Gender

Degrees	Gender		
	Total	Men	Women
Total.....	957	408	549
B.A.....	292	97	195
B.A.M.....	3	2	1
B.A.T.....	1	1	0
B.B.A.....	132	46	86
B.S.....	80	39	41
J.D.....	242	142	100
M.A.....	123	37	86
M.ACC.....	3	1	2
M.B.A.....	34	18	16
M.P.A.....	18	7	11
M.S.....	21	17	4
PH.D.....	8	1	7

Table 52. Degrees by CIP Categories*

CIP 2000 Categories	Bachelor Degrees	
	Number	Percentage
9 Communications/Journalism.....	34	6.7
10 Communication/Technologies.....	6	1.2
11 Computer/Information Sciences.....	9	1.8
13 Education.....	18	3.5
14 Engineering.....	26	5.1
15 Engineering Technologies.....	2	0.4
16 Foreign Languages and Literature.....	3	0.6
23 English.....	19	3.7
26 Biological/Life Sciences.....	63	12.4
27 Mathematics.....	7	1.4
31 Parks and Recreation.....	25	4.9
38 Philosophy and Religious Studies.....	1	0.2
39 Theology and Religious Vocations.....	4	0.8
40 Physical Sciences.....	23	4.5
42 Psychology.....	39	7.7
44 Public Administration/Social Services.....	18	3.5
45 Social Sciences.....	65	12.8
50 Visual and Performing Arts.....	4	0.8
52 Business/Marketing.....	135	26.6
54 History.....	7	1.4

* CIP is the Classification of Instruction Programs

Note. Data represents degrees awarded between July 1, 2005 and June 30, 2006

SOURCE: Office of the Registrar

Table 53. Graduating Students by Program, Race and Ethnicity

Race and Ethnicity	Academic Year					
	2000-01	2001-02	2002-03	2003-04	2004-05	2005-06
Total Graduating	924	945	914	903	970	957
African-American.....	43	39	28	23	46	36
American Indian/AK Native.....	4	-	3	4	6	6
Asian/Pacific Islander.....	23	24	24	21	20	26
Hispanic Origin.....	474	519	474	480	478	487
White, non-Hispanic.....	342	322	346	333	364	356
Unknown/Other.....	7	5	6	5	20	18
International.....	31	36	33	37	36	28
Undergraduate	464	466	470	473	509	508
African-American.....	19	10	16	12	25	14
American Indian/AK Native.....	2	0	2	0	1	0
Asian/Pacific Islander.....	13	13	12	9	11	17
Hispanic Origin.....	307	323	307	318	334	354
White, non-Hispanic.....	96	99	109	116	102	99
Unknown/Other.....	0	2	3	1	9	2
International.....	27	19	21	17	27	22
Master's	233	243	223	242	211	199
African-American.....	12	15	8	7	18	11
American Indian/AK Native.....	1	0	1	2	2	4
Asian/Pacific Islander.....	6	6	7	8	1	3
Hispanic Origin.....	84	104	91	102	83	81
White, non-Hispanic.....	120	100	102	100	89	79
Unknown/Other.....	6	3	3	4	9	16
International.....	4	15	11	19	9	5
Ph.D.	5	9	6	9	15	8
African-American.....	1	0	0	0	0	1
American Indian/AK Native.....	0	0	0	0	0	0
Asian/Pacific Islander.....	0	0	0	0	0	0
Hispanic Origin.....	0	2	1	2	2	1
White, non-Hispanic.....	3	7	5	6	11	5
Unknown/Other.....	1	0	0	0	2	0
International.....	0	0	0	1	0	1
Law	222	227	215	179	235	242
African-American.....	11	14	4	4	3	10
American Indian/AK Native.....	1	0	0	2	3	2
Asian/Pacific Islander.....	4	5	5	4	8	6
Hispanic Origin.....	83	90	75	58	59	51
White, non-Hispanic.....	123	116	130	111	162	173
Unknown/Other.....	0	0	0	0	0	0
International.....	0	2	1	0	0	0

SOURCE: Office of the Registrar

Table 54. Graduating Students by Major: Bill Greehey School of Business

Undergraduate	Academic Year					
	2000-01	2001-02	2002-03	2003-04	2004-05	2005-06
Total Graduating.....	148	147	144	138	139	135
Accounting.....	25	23	23	23	17	25
Corporate Financial Management.....	22	24	22	16	16	14
Entrepreneurial Studies.....	3	4	3	4	9	4
Finance.....	0	0	0	0	0	0
Financial Services/ Risk Management.....	10	6	8	14	17	6
General Business.....	7	10	12	11	16	7
Human Resources.....	10	3	12	11	8	14
Information Systems Management.....	18	25	14	12	10	10
International Business.....	16	10	16	18	10	18
Management.....	10	8	6	6	8	3
Marketing.....	27	34	28	23	28	34

Table 55. Graduating Students by Major: Humanities and Social Sciences

Undergraduate	Academic Year					
	2000-01	2001-02	2002-03	2003-04	2004-05	2005-06
Total Graduating.....	215	195	206	211	255	242
Broad History.....	1	1	1	0	0	0
Broad Political Science.....	1	1	0	0	0	0
Criminal Justice.....	n/a	16	22	21	19	14
Criminology.....	n/a	5	5	4	10	4
Economics.....	4	6	3	4	5	2
Elementary Education.....	0	0	0	0	0	0
English.....	17	9	13	11	25	19
English-Communication Arts.....	28	24	34	24	26	34
English-Secondary Teacher Certification I.....	n/a	1	2	0	0	0
English-Secondary Teacher Certification II.....	n/a	2	1	0	0	0
Exercise and Sport Science.....	16	15	13	16	14	22
History.....	3	8	5	5	15	7
Human Services.....	1	1	0	1	0	0
Interdisciplinary.....						
English.....	1	0	4	1	0	0
History.....	0	1	0	0	0	0
Reading.....	9	7	5	10	16	17
Spanish.....	0	0	1	0	0	0
International Relations.....	11	13	13	12	18	18
Multinational Organization Studies.....	5	5	3	5	3	2
Music.....	6	1	5	4	10	4
Organizational Administration.....	0	2	3	2	1	1
Philosophy.....	3	4	3	3	1	1
Political Science.....	32	27	30	31	48	38
Psychology.....	33	32	22	33	22	39
Public Justice.....	25	0	0	0	0	0
Sociology.....	9	4	10	12	13	7
Spanish.....	1	3	2	3	0	3
Speech Communication.....	6	3	4	8	5	6
Theology.....	3	4	2	1	4	4

SOURCE: Office of the Registrar

Table 56. Graduating Students by Major: Science, Engineering and Technology

Undergraduate	Academic Year					
	2000-01	2001-02	2002-03	2003-04	2004-05	2005-06
Total Graduating	101	124	120	124	115	131
Biochemistry.....	17	11	11	13	17	10
Biology.....	50	52	59	57	46	63
Chemistry.....	3	5	6	6	6	6
Combination w/Dentistry.....	0	0	0	0	0	0
Computer Engineering.....	2	8	4	4	5	4
Computer Information Systems.....	0	5	2	3	2	0
Computer Science.....	4	7	5	4	9	5
Computer Science/Applied Systems.....	3	6	3	6	3	4
Earth Science.....	n/a	1	1	0	0	0
Electrical Engineering.....	5	5	4	4	8	5
Engineering Science.....	1	0	1	2	0	0
Geology.....	1	2	0	2	0	0
Industrial Engineering.....	5	4	8	7	2	15
Interdisciplinary.....						
Life/Earth Science.....	0	2	0	1	0	1
Biology.....	0	1	0	0	0	0
Math.....	2	3	2	4	2	0
Mathematics.....	4	7	8	8	4	7
Physics.....	0	1	2	1	3	7
Software Engineering and Computer Applications.....	4	4	4	2	5	4

SOURCE: Office of the Registrar

Table 57. Graduating Students by Master's Program

Graduate-Master's	Academic Year					
	2000-01	2001-02	2002-03	2003-04	2004-05	2005-06
Total Graduating	233	243	223	242	211	199
Accounting.....	8	9	5	6	9	3
Business Administration.....	50	54	54	43	40	34
Catholic School Leadership.....	7	3	2	5	3	6
Communication Studies.....	8	17	9	16	3	12
Community Counseling.....	n/a	11	10	15	10	11
Computer Information Systems.....	32	33	25	34	14	10
Computer Science.....	2	4	3	4	6	0
Counseling.....	24	13	1	1	0	0
Economics.....	0	2	3	2	2	2
Education.....	n/a	n/a	2	2	1	1
Educational Leadership.....	2	8	3	10	11	6
Electrical Engineering.....	2	1	0	5	2	4
Engineering Systems Management.....	9	8	6	4	5	3
English Literature and Language.....	6	3	5	5	4	2
History.....	0	3	0	1	0	0
Industrial Engineering.....	5	1	3	9	3	0
International Relations.....	28	26	41	28	39	29
Justice Administration.....	8	4	6	0	0	0
Marriage and Family Therapy.....	n/a	4	7	7	8	12
Mental Health.....	n/a	1	1	4	0	2
Pastoral Ministry.....	0	2	0	2	2	0
Political Science.....	1	6	7	7	9	3
Psychology.....	6	0	0	0	0	0
Clinical Psychology.....	5	2	4	4	4	11
Industrial/Organizational Psychology.....	6	14	7	8	3	7
Public Administration.....	6	5	7	8	14	18
Reading.....	8	1	4	3	10	11
Software Engineering.....	2	5	3	2	0	1
Theology.....	8	3	5	7	9	11

Table 58. Graduating Students by Doctoral Program

Ph.D.	Year					
	2000-01	2001-02	2002-03	2003-04	2004-05	2005-06
Total Graduating	5	9	6	9	15	8
Counseling.....	5	0	0	0	0	0
Counseling Education and Supervision.....	n/a	5	5	5	12	6
Marriage and Family Therapy.....	n/a	4	1	4	3	2

Table 59. Graduating Law Students

Law	Year					
	2000-01	2001-02	2002-03	2003-04	2004-05	2005-06
Total Graduating	222	227	215	179	235	242

SOURCE: Office of the Registrar

Table 60. Full-Time/Part-Time Faculty

	Year						
	2000	2001	2002	2003	2004	2005	2006
Total Full-time	200	183	185	189	192	184	183
Undergraduate.....	155	140	143	149	148	143	139
Graduate.....	6	7	7	6	8	7	8
Law.....	39	36	35	34	36	34	36
Undergraduate.....	155	140	143	149	148	143	139
Men.....	100	93	93	98	94	94	91
Women.....	55	47	50	51	54	49	48
Graduate/Law.....	45	43	42	40	44	41	44
Men.....	28	29	28	28	30	27	31
Women.....	17	14	14	12	14	14	13
Total Part-time	122	154	139	139	135	149	142
Undergraduate.....	70	86	105	103	97	102	105
Graduate.....	23	38	21	27	24	24	25
Law.....	29	30	13	9	14	23	12
Total Part-time.....	93	124	139	139	135	149	142
Men.....	70	86	92	89	85	94	85
Women.....	23	38	47	50	50	55	57

Note. The University has reported data on faculty using various definitions. Thus, changes from year to year may reflect both definitional changes and actual changes in numbers. As of 2001, however, AAUP definitions have been adopted as standard in determining full-time faculty. It is not possible however, to adjust prior data to reflect current AAUP definitions. Part-time faculty reporting includes full-time university administrators that teach part-time and excludes military science teaching faculty.

SOURCE: Office of the Vice President for Academic Affairs

Table 61. Full-Time Faculty by Race and Ethnicity

Race and Ethnicity	Year						
	2000	2001	2002	2003	2004	2005	2006
Total	200	183	185	189	192	184	183
African-American.....	6	6	5	5	6	5	6
American Indian/AK Native.....	-	1	1	1	2	2	2
Asian/Pacific Islander.....	-	-	1	8	9	9	8
Hispanic Origin.....	25	25	25	26	29	25	24
White, Non-Hispanic.....	159	141	144	147	146	143	143
Unknown/Other.....	9	9	8	-	-	-	-
International.....	1	1	1	2	-	-	-
Full-time Undergraduate Faculty ...	155	140	143	149	148	143	139
African-American.....	2	2	2	2	2	2	2
American Indian/AK Native.....	-	1	1	1	2	2	2
Asian/Pacific Islander.....	-	-	1	8	9	9	8
Hispanic Origin.....	19	17	19	20	23	20	19
White, Non-Hispanic.....	124	110	111	116	112	110	108
Unknown/Other.....	9	9	8	-	-	-	-
International.....	1	1	1	2	-	-	-
Full-time Graduate/Law Faculty	45	43	42	40	44	41	44
African-American.....	4	4	3	3	4	3	4
American Indian/AK Native.....	-	-	-	-	-	-	-
Asian/Pacific Islander.....	-	-	-	-	-	-	-
Hispanic Origin.....	6	7	6	6	6	5	5
White, Non-Hispanic.....	35	32	33	31	34	33	35
Unknown/Other.....	-	-	-	-	-	-	-
International.....	-	-	-	-	-	-	-

SOURCE: Office of the Vice President for Academic Affairs

Table 62. Percentage of Full-Time Faculty by Race and Ethnicity

Race and Ethnicity	Year						
	2000	2001	2002	2003	2004	2005	2006
Total.....	100.0	100.0	100.0	100.0	100.0	100.0	100.0
African-American.....	3.0	3.3	2.7	2.6	3.1	2.7	3.3
American Indian/AK Native.....	-	1	1	1	1	1	1
Asian/Pacific Islander.....	-	-	1	4	5	5	4
Hispanic Origin.....	13	14	14	14	15	14	13
White, non-Hispanic.....	80	77	78	78	76	78	78
Unknown/Other.....	5	5	4	-	-	-	-
International.....	1	1	1	1	-	-	-
Full-time Undergraduate Faculty...	100	100	100	100	100	100	100
African-American.....	1	1	1	1	1	1	1
American Indian/AK Native.....	-	1	1	1	1	1	1
Asian/Pacific Islander.....	-	-	1	5	6	6	6
Hispanic Origin.....	12	12	13	13	16	14	14
White, non-Hispanic.....	80	79	78	78	76	77	78
Unknown/Other.....	6	6	6	-	-	-	-
International.....	1	1	1	1	-	-	-
Full-time Graduate/Law Faculty....	100	100	100	100	100	100	100
African-American.....	9	9	7	8	9	7	9
American Indian/AK Native.....	-	-	-	-	-	-	-
Asian/Pacific Islander.....	-	-	-	-	-	-	-
Hispanic Origin.....	13	16	14	15	14	12	11
White, non-Hispanic.....	78	74	79	78	77	80	80
Unknown/Other.....	-	-	-	-	-	-	-
International.....	-	-	-	-	-	-	-

Note. Percentages calculated by the Office of Institutional Research

Table 63. Full-Time Faculty by Level of Appointment

Rank	Year						
	2000	2001	2002	2003	2004	2005	2006
Total.....	200	183	185	189	192	184	183
Professor.....	76	79	84	82	86	78	78
Associate.....	54	47	43	38	40	42	43
Assistant.....	48	45	43	50	51	47	47
Instructor.....	12	7	8	4	7	8	6
Other.....	10	5	7	15	8	9	9
Undergraduate.....	155	140	143	149	148	143	139
Professor.....	44	47	51	54	53	49	48
Associate.....	49	42	39	34	36	37	39
Assistant.....	46	43	39	48	47	44	40
Instructor.....	11	6	7	1	4	4	3
Other.....	5	2	7	12	8	9	9
Graduate and Law.....	45	43	42	40	44	41	44
Professor.....	32	32	33	28	33	29	30
Associate.....	5	5	4	4	4	5	4
Assistant.....	2	2	4	2	4	3	7
Instructor.....	1	1	1	3	3	4	3
Other.....	5	3	0	3	0	0	0

SOURCE: Office of the Vice President for Academic Affairs

Table 64. Full-Time Faculty by Level of Appointment, Gender, Race and Ethnicity, Fall 2006

	All Faculty							
	African American		Hispanic		White, non-Hispanic		Other	
	Men	Women	Men	Women	Men	Women	Men	Women
Total.....	4	1	10	6	74	38	8	0
Tenured.....	4	0	9	6	64	24	7	0
Tenure-track.....	0	1	1	0	10	14	1	0
Professor								
Tenured.....	4	0	6	3	44	12	4	0
Tenure-track.....	0	0	0	0	0	0	0	0
Associate								
Tenured.....	0	0	3	3	16	11	3	0
Tenure-track.....	0	0	0	0	1	2	0	0
Assistant								
Tenured.....	0	0	0	0	4	1	0	0
Tenure-track.....	0	1	1	0	9	12	1	0
Instructor								
Tenured.....	0	0	0	0	0	0	0	0
Tenure-track.....	0	0	0	0	0	0	0	0
Other								
Tenured.....	0	0	0	0	0	0	0	0
Tenure-track.....	0	0	0	0	0	0	0	0
Total								
Non-tenure track...	0	1	2	6	23	8	1	1
Professor.....	0	0	0	0	2	2	0	0
Associate.....	0	0	0	0	4	0	0	0
Assistant.....	0	1	1	2	10	3	1	1
Instructor.....	0	0	1	0	3	2	0	0
Other.....	0	0	0	4	4	1	0	0

Table 65. Full-Time Faculty and Tenure Status

	Number	Percent
Total Tenure Status.....	183	100.0
Tenured	114	62.3
Tenured track.....	27	14.8
Non-tenured track.....	42	23.0
Tenure and tenure track.....	141	100.0
Professor.....	73	51.8
Associate.....	39	27.7
Assistant.....	29	20.6
Instructor.....	0	0.0
Other.....	0	0.0

SOURCE: Office of the Vice President for Academic Affairs

Table 66. Full-Time Faculty by Level of Appointment, Gender, Race and Ethnicity, Fall 2006

Bill Greehey School of Business										
	African American		Hispanic		White, non-Hispanic		Other			
	Men	Women	Men	Women	Men	Women	Men	Women		
Total.....	0	0	0	1	13	8	1	0		
Tenured.....	0	0	0	1	11	5	1	0		
Tenure-track.....	0	0	0	0	2	3	0	0		
Professor										
Tenured.....	0	0	0	1	10	2	1	0		
Tenure-track.....	0	0	0	0	0	0	0	0		
Associate										
Tenured.....	0	0	0	0	1	3	0	0		
Tenure-track.....	0	0	0	0	0	0	0	0		
Assistant										
Tenured.....	0	0	0	0	0	0	0	0		
Tenure-track.....	0	0	0	0	2	3	0	0		
Instructor										
Tenured.....	0	0	0	0	0	0	0	0		
Tenure-track.....	0	0	0	0	0	0	0	0		
Other										
Tenured.....	0	0	0	0	0	0	0	0		
Tenure-track.....	0	0	0	0	0	0	0	0		
Total										
Non-tenure track.....	0	0	0	0	3	1	0	0		
Professor.....	0	0	0	0	0	0	0	0		
Associate.....	0	0	0	0	1	0	0	0		
Assistant.....	0	0	0	0	2	1	0	1		
Instructor.....	0	0	0	0	0	0	0	0		
Other.....	0	0	0	0	0	0	0	0		

Table 67. Full-Time Faculty and Tenure Status

	Number	Percent
Total Tenure Status.....	28	100.0
Tenured	18	64.3
Tenured track.....	5	17.9
Non-tenured track.....	5	17.9
Tenure and tenure track.....	23	100.0
Professor.....	14	60.9
Associate.....	4	17.4
Assistant.....	5	21.7
Instructor.....	0	0.0
Other.....	0	0.0

SOURCE: Office of the Vice President for Academic Affairs

Table 68. Full-Time Faculty by Level of Appointment, Gender, Race and Ethnicity, Fall 2006

School of Humanities and Social Sciences										
	African American		Hispanic		White, non-Hispanic		Other			
	Men	Women	Men	Women	Men	Women	Men	Women		
Total.....	1	0	7	4	24	17	1	0		
Tenured.....	0	0	6	4	20	11	1	0		
Tenure-track.....	0	0	1	0	4	6	0	0		
Professor										
Tenured.....	1	0	3	1	12	4	0	0		
Tenure-track.....	0	0	0	0	0	0	0	0		
Associate										
Tenured.....	0	0	3	3	6	7	1	0		
Tenure-track.....	0	0	0	0	1	1	0	0		
Assistant										
Tenured.....	0	0	0	0	2	0	0	0		
Tenure-track.....	0	0	1	0	3	5	0	0		
Instructor										
Tenured.....	0	0	0	0	0	0	0	0		
Tenure-track.....	0	0	0	0	0	0	0	0		
Other										
Tenured.....	0	0	0	0	0	0	0	0		
Tenure-track.....	0	0	0	0	0	0	0	0		
Total										
Non-tenured track.....	0	0	0	6	14	2	0	0		
Professor.....	0	0	0	0	0	0	0	0		
Associate.....	0	0	0	0	1	0	0	0		
Assistant.....	0	0	0	2	6	1	0	0		
Instructor.....	0	0	0	0	3	0	0	0		
Other.....	0	0	0	4	4	1	0	0		

Table 69. Full-Time Faculty and Tenure Status

	Number	Percent
Total Tenure Status.....	76	100.0
Tenured	43	56.6
Tenured track.....	11	14.5
Non-tenured track.....	22	28.9
Tenure and tenure track.....	54	100.0
Professor.....	21	38.9
Associate.....	22	40.7
Assistant.....	11	20.4
Instructor.....	0	0
Other.....	0	0

SOURCE: Office of the Vice President for Academic Affairs

Table 70. Full-Time Faculty by Level of Appointment, Gender, Race and Ethnicity, Fall 2006

School of Science, Engineering and Technology										
	African American		Hispanic		White, non-Hispanic		Other			
	Men	Women	Men	Women	Men	Women	Men	Women		
Total.....	1	0	1	0	16	8	6	0		
Tenured.....	1	0	1	0	13	5	5	0		
Tenure-track.....	0	0	0	0	3	3	1	0		
Professor										
Tenured.....	1	0	1	0	5	3	3	0		
Tenure-track.....	0	0	0	0	0	0	0	0		
Associate										
Tenured.....	0	0	0	0	6	1	2	0		
Tenure-track.....	0	0	0	0	0	1	0	0		
Assistant										
Tenured.....	0	0	0	0	2	1	0	0		
Tenure-track.....	0	0	0	0	3	2	1	0		
Instructor										
Tenured.....	0	0	0	0	0	0	0	0		
Tenure-track.....	0	0	0	0	0	0	0	0		
Other										
Tenured.....	0	0	0	0	0	0	0	0		
Tenure-track.....	0	0	0	0	0	0	0	0		
Total										
Non-tenured track.....	0	0	0	0	2	0	1	0		
Professor.....	0	0	0	0	0	0	0	0		
Associate.....	0	0	0	0	1	0	0	0		
Assistant.....	0	0	0	0	1	0	1	0		
Instructor.....	0	0	0	0	0	0	0	0		
Other.....	0	0	0	0	0	0	0	0		

Table 71. Full-Time Faculty and Tenure Status

	Number	Percent
Total Tenure Status.....	35	100.0
Tenured	25	71.4
Tenured track.....	7	20.0
Non-tenured track.....	3	8.6
Tenure and tenure track.....	32	100.0
Professor.....	13	40.6
Associate.....	10	31.3
Assistant.....	9	28.1
Instructor.....	0	0.0
Other.....	0	0.0

SOURCE: Office of the Vice President for Academic Affairs

Table 72. Full-Time Faculty by Level of Appointment, Gender, Race and Ethnicity, Fall 2006

	Graduate School							
	African American		Hispanic		White, non-Hispanic		Other	
	Men	Women	Men	Women	Men	Women	Men	Women
Total	0	0	0	0	3	2	0	0
Tenured.....	0	0	0	0	3	1	0	0
Tenure-track.....	0	0	0	0	0	1	0	0
Professor								
Tenured.....	0	0	0	0	0	1	0	0
Tenure-track.....	0	0	0	0	0	0	0	0
Associate								
Tenured.....	0	0	0	0	3	0	0	0
Tenure-track.....	0	0	0	0	0	0	0	0
Assistant								
Tenured.....	0	0	0	0	0	0	0	0
Tenure-track.....	0	0	0	0	0	1	0	0
Instructor								
Tenured.....	0	0	0	0	0	0	0	0
Tenure-track.....	0	0	0	0	0	0	0	0
Other								
Tenured.....	0	0	0	0	0	0	0	0
Tenure-track.....	0	0	0	0	0	0	0	0
Total								
Non-tenured track	0	0	0	0	2	1	0	0
Professor.....	0	0	0	0	0	0	0	0
Associate.....	0	0	0	0	1	0	0	0
Assistant.....	0	0	0	0	1	1	0	0
Instructor.....	0	0	0	0	0	0	0	0
Other.....	0	0	0	0	0	0	0	0

Table 73. Full-Time Faculty and Tenure Status

	Number	Percent
Total Tenure Status	8	100.0
Tenured	4	50.0
Tenured track.....	1	12.5
Non-tenured track.....	3	37.5
Tenure and tenure track	5	100.0
Professor.....	1	20.0
Associate.....	3	60.0
Assistant.....	1	20.0
Instructor.....	0	0.0
Other.....	0	0.0

SOURCE: Office of the Vice President for Academic Affairs

Table 74. Full-Time Faculty by Level of Appointment, Gender, Race and Ethnicity, Fall 2006

	Law School							
	African American		Hispanic		White, non-Hispanic		Other	
	Men	Women	Men	Women	Men	Women	Men	Women
Total.....	2	1	2	1	18	3	0	0
Tenured.....	2	0	2	1	17	2	0	0
Tenure-track.....	0	1	0	0	1	1	0	0
Professor								
Tenured.....	2	0	2	1	17	2	0	0
Tenure-track.....	0	0	0	0	0	0	0	0
Associate								
Tenured.....	0	0	0	0	0	0	0	0
Tenure-track.....	0	0	0	0	0	0	0	0
Assistant								
Tenured.....	0	0	0	0	0	0	0	0
Tenure-track.....	0	1	0	0	1	1	0	0
Instructor								
Tenured.....	0	0	0	0	0	0	0	0
Tenure-track.....	0	0	0	0	0	0	0	0
Other								
Tenured.....	0	0	0	0	0	0	0	0
Tenure-track.....	0	0	0	0	0	0	0	0
Total								
Non-tenured track.....	0	1	2	0	2	4	0	0
Professor.....	0	0	0	0	0	2	0	0
Associate.....	0	0	0	0	1	0	0	0
Assistant.....	0	1	1	0	1	0	0	0
Instructor.....	0	0	1	0	0	2	0	0
Other.....	0	0	0	0	0	0	0	0

Table 75. Full-Time Faculty and Tenure Status

	Number	Percent
Total Tenure Status.....	36	100.0
Tenured	24	66.7
Tenured track.....	3	8.3
Non-tenured track.....	9	25.0
Tenure and tenure track.....	27	100.0
Professor.....	24	88.9
Associate.....	0	0.0
Assistant.....	3	11.1
Instructor.....	0	0.0
Other.....	0	0.0

SOURCE: Office of the Vice President for Academic Affairs

Table 76. New Student Orientation

	2005 - 2006				
	June I FF	June II FF	August FF	August Transfer	Mid-year FF/Transfer
Orientation					
Registered Students.....	181	195	146	114	54
Parents.....	248	226	111	33	20
Students Advised.....	179	187	145	112	50
Actual total attendance.....	427	413	256	145	70
Percent Students with					
Parents/guests.....	62%	74%	47%	21%	36%
Orientation-On-campus Housing					
On-campus Total.....	178	155			
Students.....	116	112			
Men.....	31	38			
Women.....	85	74			
Parents.....	62	43			
Percent Attending Orientation					
Percent stayed on campus.....	42%	38%			
Students on-campus.....	65%	60%			
Parents on-campus.....	25%	19%			

SOURCE: Office of Student Life

Table 77. Personal and Academic
Development Course: ND101

	Year
	2005
Entering Class.....	494
Enrolled	480
Class Sections.....	22
Average section size.....	22
Withdrawn or no pass.....	37

SOURCE: Office of Student Life

Table 78. Residence Hall Occupancy by Classification and Gender, Fall 2006

Classification	Residence Hall											
	Total	AD	AF	CH	CR	DO	FL	HJL	JD	LO	MA	TR
Total	1,122	61	55	108	93	172	59	83	59	106	134	192
Undergraduate.....	1,070	61	55	59	93	172	59	82	59	106	134	190
Graduate.....	26	-	-	25	-	-	-	1	-	-	-	-
Law.....	26	-	-	24	-	-	-	-	-	-	-	2
Total	1,122	61	55	108	93	172	59	83	59	106	134	192
Men.....	429	28	14	58	31	86	27	36	23	-	52	74
Women.....	693	33	41	50	62	86	32	47	36	106	82	118
Undergraduate												
First-time Freshmen...	387	-	-	-	-	162	-	-	-	100	124	1
Men.....	127	-	-	-	-	80	-	-	-	-	47	-
Women.....	260	-	-	-	-	82	-	-	-	100	77	1
Freshmen.....	116	6	15	-	18	3	6	8	9	1	1	49
Men.....	45	2	4	-	11	2	3	2	2	-	-	19
Women.....	71	4	11	-	7	1	3	6	7	1	1	30
Sophomore.....	217	24	30	2	28	3	19	6	23	3	4	75
Men.....	87	12	9	1	12	3	7	1	16	-	2	24
Women.....	130	12	21	1	16	-	12	5	7	3	2	51
Junior	167	22	8	8	26	4	21	28	19	1	3	27
Men.....	59	9	1	4	4	1	11	14	3	-	3	9
Women.....	108	13	7	4	22	3	10	14	16	1	-	18
Senior	183	9	2	49	21	-	13	40	8	1	2	38
Men.....	75	5	-	19	4	-	6	18	2	-	-	21
Women.....	108	4	2	30	17	-	7	22	6	1	2	17
Graduate	26	-	-	25	-	-	-	1	-	-	-	-
Men.....	17	-	-	16	-	-	-	1	-	-	-	-
Women.....	9	-	-	9	-	-	-	-	-	-	-	-
Law	26	-	-	24	-	-	-	-	-	-	-	2
Men.....	19	-	-	18	-	-	-	-	-	-	-	1
Women.....	7	-	-	6	-	-	-	-	-	-	-	1

Table 79. Residence Hall Capacity

Residence Hall	Fall 2006		
	Capacity	Occupancy	Row %
Total	1,115	1,122	
Adele.....	59	61	103.4
Anthony Frederick.....	51	55	107.8
Chaminade.....	108	108	100.0
Cremer.....	90	93	103.3
Dougherty.....	172	172	100.0
Flores.....	59	59	100.0
Herbert and John Leies.....	80	83	103.8
John Donohoo.....	59	59	100.0
Our Lady of Lourdes.....	100	106	106.0
Marian.....	132	134	101.5
Treadaway.....	205	192	93.7

SOURCE: Residence Life

Table 80. Non-Greek Student Organizations

	Semester	
	Fall 2005	Spring 2006
Recognized Student Organizations (RSO's)	81	81
General Interest and Academic.....	33	28
Honorary.....	15	15
Law	31	31
Graduate.....	1	2
New.....	1	5
Membership		
Average.....	27	54
Median.....	24	43

Table 81. Greek Organizations

	Semester	
	Fall 2005	Spring 2006
Number of Interfraternity Council Member Fraternities.....	4	4
Total Number of Students.....	91	100
Number of College Panhellenic Council Member Sororities.....	4	4
Total Number of Students.....	196	207

Table 82. Presidential Awards: Spring 2006

Nominated.....	196
Applied.....	83
Selected.....	14
Award Recipients by School	
Bill Greehey School of Business.....	4
Humanities and Social Science.....	6
Science, Engineering and Technology.....	4
Graduate School.....	0
Law School.....	0
Award Recipients by Gender	
Men.....	7
Women.....	7
Award Recipients by Grade Point Average	
3.00-3.49.....	3
3.50-4.00.....	11

Note. The Presidential Awards are reserved for qualified outstanding students who exemplify academic, leadership and service qualities both at St. Mary's University and the outside community. Ten to 14 awards are given annually to graduating students.

SOURCE: Office of Student Life

Table 83. Career Services Center

	Year
	2005-2006
Original Student / Alumnus Interactions.....	2,148
Original Employer Contacts.....	139
*Students Internship Participation	
Undergraduate.....	197
Graduate.....	59
*Students Securing Full-time Employment	
Undergraduate.....	152
Graduate.....	89

Note. *Reported in *Graduating Student Survey* administered three weeks prior to graduation.
See *Data Terms* regarding interaction description.

SOURCE: Career Services Center

Table 84. Campus Recreation

	Year
	2005-2006
Intramurals	
Participants.....	1,319
Men.....	1,038
Women	281
Club Sports	
Active club sports.....	1
Participants.....	12
Competitions.....	-
Classes.....	14
Participants.....	556
Fitness/Wellness	
Fitness classes.....	5
Participants.....	115
Fitness assessments.....	285
Health fair attendees.....	468

SOURCE: Campus Recreation/AA&CC

Table 85. Annual Utilization of Student Health Center by Program Level

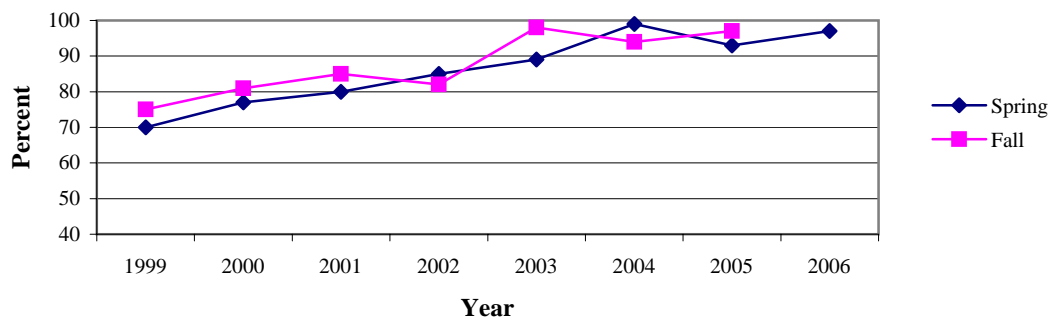
	2004-2005			2005-2006		
	Visits	Unique Visits (UV)	UV / FT Enrollment %	Visits	Unique Visits (UV)	UV / FT Enrollment %
Total.....	2,437	1,026	31	2,324	980	31
Undergraduate.....	1,852	790	35	1,742	748	34
Graduate.....	136	61	29	141	52	10
Law.....	449	175	22	435	180	24

Note. Unique visit (UV): unduplicated count of office visits.

Table 86. Immunization Compliance Rates Among Resident Hall and International Students

	Semester	
	Fall %	Spring %
1999	75	70
2000	81	77
2001	85	80
2002	82	85
2003	98	89
2004	94	99
2005	97	93
2006	97	97

Figure 5. Immunization Compliance



SOURCE: Student Health Center

Table 87. Full-Time Administration and Staff by Gender, Race/Ethnicity and Classification

	Year						
	2000	2001	2002	2003	2004	2005	2006
Total.....	407	418	392	411	430	415	410
Gender							
Men.....	160	168	167	175	186	176	165
Women.....	247	250	225	236	244	239	245
Race and Ethnicity							
African-American.....	14	15	12	14	21	19	17
American Indian/AK Native.....	2	2	1	1	1	1	-
Asian/Pacific Islander.....	6	6	7	8	7	8	8
Hispanic Origin.....	234	245	223	233	236	231	232
White, non-Hispanic.....	151	150	149	155	165	156	153
Classification							
Executive/Administration.....	49	53	70	68	71	71	71
Other Professional.....	107	106	109	125	123	113	113
Technical.....	24	24	16	16	20	21	19
Clerical.....	132	136	105	107	118	117	118
Skilled Crafts.....	21	20	26	27	29	27	24
Service.....	74	79	66	68	69	66	65

SOURCE: Office of Human Resources

Table 88. Full-time Administration and Staff by Gender, Race/Ethnicity and Classification

	Year						
	2000	2001	2002	2003	2004	2005	2006
Percentage.....	100.0	100.0	100.0	100.0	100.0	100.0	100.0
Gender							
Men.....	39.3	40.2	42.6	42.6	43.3	42.4	40.2
Women.....	60.7	59.8	57.4	57.4	56.7	57.6	59.8
Race and Ethnicity							
African-American.....	3.4	3.6	3.1	3.4	4.9	4.6	4.1
American Indian/AK Native.....	0.5	0.5	0.3	0.2	0.2	0.2	-
Asian/Pacific Islander.....	1.5	1.4	1.8	1.9	1.6	1.9	2.0
Hispanic Origin.....	57.5	58.6	56.9	56.7	54.9	55.7	56.6
White, non-Hispanic.....	37.1	35.9	38.0	37.7	38.4	37.6	37.3
Classification							
Executive/Administration.....	12.0	12.7	17.9	16.5	16.5	17.1	17.3
Other Professional.....	26.3	25.4	27.8	30.4	28.6	27.2	27.6
Technical.....	5.9	5.7	4.1	3.9	4.7	5.1	4.6
Clerical.....	32.4	32.5	26.8	26.0	27.4	28.2	28.8
Skilled Crafts.....	5.2	4.8	6.6	6.6	6.7	6.5	5.9
Service.....	18.2	18.9	16.8	16.5	16.0	15.9	15.9

Note. Payroll Data as of Oct. 31, 2006. Percentages calculated by Office of Institutional Research.

SOURCE: Office of Human Resources

Table 89. Administration and Staff by Classification, Gender and Employment Status

Classification	Total	Men		Women	
		Full-time	Part-time	Full-time	Part-time
Total	450	165	20	245	20
Executive/Administration.....	72	31	-	40	1
Other Professional.....	120	48	4	65	3
Technical.....	19	6	-	13	-
Clerical.....	133	16	8	102	7
Skilled Crafts.....	25	24	1	-	-
Service.....	81	40	7	25	9

Table 90. Administration and Staff by Race, Ethnicity, Gender and Employment Status

Race and Ethnicity	Total	Men		Women	
		Full-time	Part-time	Full-time	Part-time
Total	450	165	20	245	20
African-American.....	21	6	3	11	1
American Indian/AK Native....	-	-	-	-	-
Asian/Pacific Islander.....	9	5	-	3	1
Hispanic Origin.....	251	81	6	151	13
White, non-Hispanic.....	167	73	10	80	4
Unknown/Other.....	2	-	1	-	1

SOURCE: Office of Human Resources

Table 91. Employee Classification by Race, Ethnicity, Gender and Employment Status

Classification	Total	Men		Women	
		Full-time	Part-time	Full-time	Part-time
Executive/Administration	72	31	0	40	1
African-American.....	0	0	0	3	0
American Indian/AK Native....	0	0	0	0	0
Asian/Pacific Islander.....	2	2	0	1	0
Hispanic Origin.....	8	8	0	14	1
White, Non-Hispanic.....	21	21	0	22	0
Unknown/Other.....	0	0	0	0	0
Other Professional	120	48	4	65	3
African-American.....	8	1	0	6	1
American Indian/AK Native....	0	0	0	0	0
Asian/Pacific Islander.....	2	1	0	1	0
Hispanic Origin.....	42	16	0	26	0
White, Non-Hispanic.....	67	30	3	32	2
Unknown/Other.....	1	0	1	0	0
Technical	19	6	0	13	0
African-American.....	1	0	0	1	0
American Indian/AK Native....	0	0	0	0	0
Asian/Pacific Islander.....	1	0	0	1	0
Hispanic Origin.....	13	4	0	9	0
White, Non-Hispanic.....	4	2	0	2	0
Unknown/Other.....	0	0	0	0	0
Clerical	133	16	8	102	7
African-American.....	4	2	1	1	0
American Indian/AK Native....	0	0	0	0	0
Asian/Pacific Islander.....	2	1	0	0	1
Hispanic Origin.....	98	11	4	80	3
White, Non-Hispanic.....	28	2	3	21	2
Unknown/Other.....	1	0	0	0	1
Skilled Crafts	25	24	1	0	0
African-American.....	2	1	1	0	0
American Indian/AK Native....	0	0	0	0	0
Asian/Pacific Islander.....	0	0	0	0	0
Hispanic Origin.....	18	18	0	0	0
White, Non-Hispanic.....	5	5	0	0	0
Unknown/Other.....	0	0	0	0	0
Service	81	40	7	25	9
African-American.....	3	2	1	0	0
American Indian/AK Native....	0	0	0	0	0
Asian/Pacific Islander.....	1	1	0	0	0
Hispanic Origin.....	57	24	2	22	9
White, Non-Hispanic.....	20	13	4	3	0
Unknown/Other.....	0	0	0	0	0

SOURCE: Office of Human Resources

Table 92. Financial Summary

Fiscal Year End	Year										
	1996	1997	1998	1999	2000	2001	2002	2003	2004	2005	2006
Total Assets.....	101	112	126	144	170	182	180	182	190	197	237
Total Liabilities.....	20	20	18	18	33	31	31	36	34	34	36
Total Net Assets.....	81	92	108	126	137	151	149	146	156	163	201
Unrestricted Net Assets.....	52	56	62	70	87	99	100	97	100	103	110
Temporarily Restricted Net Assets.	13	19	28	38	30	31	27	26	30	33	39
Permanently Restricted Net Assets.	16	17	18	18	20	21	22	23	26	27	52
Endowment - Ending Market Value..	\$45	\$52	\$64	\$72	\$80	\$83	\$81	\$84	\$94	\$103	\$ 136
Endowment Per FTE Student.....	12,090	14,219	17,131	19,318	21,804	22,342	21,774	21,750	25,073	27,681	37,978
Net Tuition and Fees Per Student	8,598	9,297	9,636	9,928	10,084	10,767	9,409	9,581	10,936	11,556	12,008
Student Revenue/Total Revenue.....	65%	69%	65%	65%	71%	68%	73%	72%	64%	68%	50%
Contributions/Total Revenue.....	7%	7%	7%	9%	9%	15%	5%	6%	6%	6%	26%
Academic Instruction and Support as a % of Total Expenses.....	51%	52%	52%	55%	54%	53%	55%	53%	53%	54%	53%

Note. Adoption of an accounting interpretation during 2005-06 resulted in retrospective adjustments to 2004-05
Dollar amount in millions

SOURCE: Office of the Vice President for Finance and Administration

Table 92. Financial Summary (Continued)

Revenue and Expense Activity	1996-97	1997-98	1998-99	1999-00	2000-01	2001-02	2002-03	2003-04	2004-05	2005-06
Revenues.....	59	68	69	65	72	60	65	80	80	110
Expenses.....	48	52	51	54	58	62	68	70	71	72
Increase (Decrease) in Net Assets.....	11	16	18	11	14	-2	-3	10	9	38
Revenues.....	59	68	69	65	72	60	65	80	80	110
Net Tuition and Fees.....	34	36	37	37	40	35	37	41	43	43
Contributions.....	4	5	6	6	11	3	4	5	5	29
Government Grants and Contracts.....	3	3	3	4	4	11	12	11	10	11
Investment Income/Gains/Losses.....	9	14	13	7	6	0	0	11	9	13
Auxiliary Enterprises.....	7	8	8	9	9	9	10	10	11	12
All Other.....	2	2	2	2	2	2	2	2	2	2
Expenses.....	48	52	51	54	58	62	68	70	71	72
Academic Instruction.....	19	21	21	22	23	24	26	26	28	28
Academic Support.....	6	6	7	7	8	10	10	11	10	10
Research and Public Service.....	1	1	1	1	1	1	1	1	2	2
Student Services.....	6	6	6	7	7	7	8	9	9	9
Institutional Support.....	6	9	7	7	9	9	10	10	10	10
Fund Raising.....	2	2	2	2	2	3	3	3	2	2
Auxiliary Enterprises.....	8	7	7	8	8	8	10	10	10	11

Note. Dollar amount in millions.

SOURCE: Office of the Vice President for Finance and Administration

Data Terms

Alumni Original	Total number of alumni served (each alumni served is counted only one time in this number) through individual contact with staff members for purposes of seeking assistance through services such as: resume/cover letter review, mock interview preparation, graduate school preparation, career exploration, etc.
Alumni Total	Total number of interactions (can be multiple times per alumni) by alumni served through individual contact with staff members for purposes of seeking assistance through services such as: resume/cover letter review, mock interview preparation, graduate school preparation, career exploration, etc.
Class Levels	<u>Freshman</u> : 30 or fewer credit hours; <u>Sophomore</u> : 31-60 credit hours; <u>Junior</u> : 61-90 credit hours; <u>Senior</u> : more than 90 credit hours; <u>Post-Baccalaureate</u> : students with bachelor's degree enrolled for additional coursework.
Employer Original	Total number of employers served (each employer served is counted only one time in this number) served through contact with students for employment purposes in the on-campus recruitment program through venues such as: on-campus interviews, career fairs, information sessions and tables, class presentations, etc.
Employer Total	Total number of interactions with employers (can be multiple times per employer) served through individual contact in order to seek students for employment purposes in the on-campus recruitment program through venues such as: on-campus interviews, career fairs, information sessions and tables, class presentations, etc.
First-Time First-Year Freshman	Enrolled at St. Mary's with no prior credits at other institutions; except, for summer session prior to first enrollment.
Full-Time Faculty	Faculty on 9- or 12- month contracted to teach FT faculty load; includes both tenure-track and non-tenure track. <u>Tenure track</u> : Full-time faculty hired under contract and ultimately eligible for tenure. <u>Non-tenure track</u> : Full-time faculty under contract but not ultimately eligible for tenure.
Full-Time Student	Undergraduate: 12 credit hours or more per semester. Graduate (Masters or Ph.D.): 8 credit hours or more per semester. Law: 10 credit hours or more per semester.
Graduation, Persistence and Attrition	<u>Graduation</u> : Graduated some time within period indicated. <u>Persistence</u> : Student still enrolled at end of time indicated. <u>Attrition</u> : Student not graduated not enrolled at end of time indicated; includes transfers to other institutions.
Part-Time Faculty:	Faculty hired on course-by-course basis, no annual contract.
Part-time Student:	Enrolled in fewer than the number of hours defining full-time students at each level.

Regular Admissions Students admitted to the university without requiring any special program or enrollment restrictions designed to improve basic college level skills.

Student Full-Time Equivalent (FTE)

Undergraduate FTE: Headcount FT Students + (credit hours PT Students/12)

Graduate/Ph.D. FTE: Headcount FT Students + (credit hours PT Students/ 8)

Law FTE: Headcount FT students + (credit hours PT students/10)

Total: FTE Undergraduate + FTE Graduate & Ph.D. + FTE Law.

Student Retention Refers specifically to one-year retention rate of full-time, first-time freshmen. Students who first enrolled in a given fall semester and were enrolled the following fall semester are considered retained.

Transfer Student Enrolled at St. Mary's with credit from other higher education institution in semester(s) other than summer prior to first semester enrolled at St. Mary's.